



Madison, Wisconsin

# CITY OF MADISON

## CITY ENGINEERING DIVISION

### DEPARTMENT OF PUBLIC WORKS

# PLAN OF PROPOSED IMPROVEMENT

## 2024 RESURFACING

#### INDEX OF SHEETS

SHEET NO.	EC1-EC4	EROSION CONTROL
SHEET NO.	U1-U10	UTILITY PLAN & PROFILES
SHEET NO.	U11-U12	STORM SEWER SCHEDULE

CITY PROJECT NO. 14896  
CONTRACT NO. 8736

### PROJECT LOCATION

CONVENTIONAL SIGNS	
FIELD VERIFY ALL UTILITY LOCATIONS	
GAS	— G —
STORM SEWER	— ST —
SANITARY SEWER	— SN —
WATER	— W —
BURIED ELECTRIC	— E —
OVERHEAD ELECTRIC	— OH —
POWER POLE	□



**Revision 1 - 5/15/2024**  
Revised: Title, EC1-EC4, U1-U6,U11-U12

PUBLIC IMPROVEMENT PROJECT APPROVED

APPROVED DATE

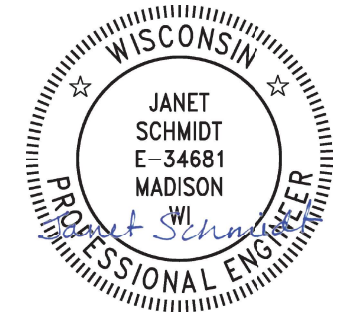
BY THE COMMON COUNCIL OF MADISON, WISCONSIN

PUBLIC IMPROVEMENT DESIGN APPROVED BY:

*Janet* Feb 21, 2024

City Engineer Date

STORM SEWER DESIGNED BY:



Feb 21, 2024

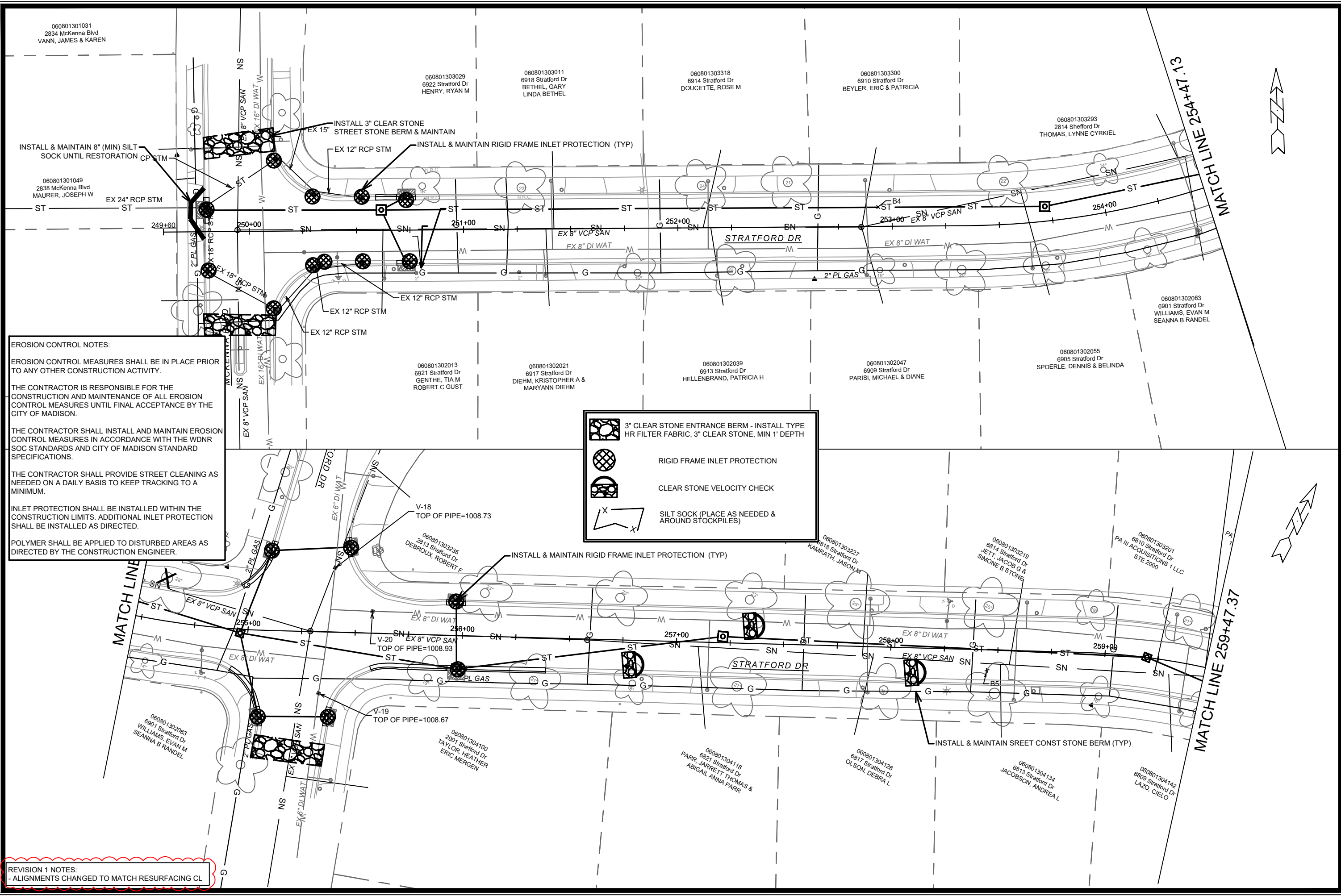
NOTES:  
ALL GUTTERS SHALL DRAIN WITH A MINIMUM GRADE OF 0.50% TOWARD STORM SEWER INLETS.

PLOT SCALE: 1" = 1'

PLOT NAME: ---

REV. DATE: 2/17/2024 4:35 PM

ORIGINATOR: CITY\_OF\_MADISON



**EROSION CONTROL NOTES:**

EROSION CONTROL MEASURES SHALL BE IN PLACE PRIOR TO ANY OTHER CONSTRUCTION ACTIVITY.

THE CONTRACTOR IS RESPONSIBLE FOR THE CONSTRUCTION AND MAINTENANCE OF ALL EROSION CONTROL MEASURES UNTIL FINAL ACCEPTANCE BY THE CITY OF MADISON.

THE CONTRACTOR SHALL INSTALL AND MAINTAIN EROSION CONTROL MEASURES IN ACCORDANCE WITH THE WDNR SOC STANDARDS AND CITY OF MADISON STANDARD SPECIFICATIONS.

THE CONTRACTOR SHALL PROVIDE STREET CLEANING AS NEEDED ON A DAILY BASIS TO KEEP TRACKING TO A MINIMUM.

INLET PROTECTION SHALL BE INSTALLED WITHIN THE CONSTRUCTION LIMITS. ADDITIONAL INLET PROTECTION SHALL BE INSTALLED AS DIRECTED.

POLYMER SHALL BE APPLIED TO DISTURBED AREAS AS DIRECTED BY THE CONSTRUCTION ENGINEER.

	3" CLEAR STONE ENTRANCE BERM - INSTALL TYPE HR FILTER FABRIC, 3" CLEAR STONE, MIN 1' DEPTH
	RIGID FRAME INLET PROTECTION
	CLEAR STONE VELOCITY CHECK
	SILT SOCK (PLACE AS NEEDED & AROUND STOCKPILES)

**REVISION 1 NOTES:**  
 - ALIGNMENTS CHANGED TO MATCH RESURFACING CL

14896	14896	14896	14896	14896	14896
MADISON, WI	MADISON, WI	MADISON, WI	MADISON, WI	MADISON, WI	MADISON, WI
8736	8736	8736	8736	8736	8736
CONTRACT NO:	CONTRACT NO:	CONTRACT NO:	CONTRACT NO:	CONTRACT NO:	CONTRACT NO:
EROSION CONTROL - STRATFORD DR	EROSION CONTROL - STRATFORD DR	EROSION CONTROL - STRATFORD DR	EROSION CONTROL - STRATFORD DR	EROSION CONTROL - STRATFORD DR	EROSION CONTROL - STRATFORD DR
2024 RESURFACING	2024 RESURFACING	2024 RESURFACING	2024 RESURFACING	2024 RESURFACING	2024 RESURFACING
M:\DESIGN\Projects\14896\CAD\Servers\14896SWR-PipeNetwork.dwg	M:\DESIGN\Projects\14896\CAD\Servers\14896SWR-PipeNetwork.dwg	M:\DESIGN\Projects\14896\CAD\Servers\14896SWR-PipeNetwork.dwg	M:\DESIGN\Projects\14896\CAD\Servers\14896SWR-PipeNetwork.dwg	M:\DESIGN\Projects\14896\CAD\Servers\14896SWR-PipeNetwork.dwg	M:\DESIGN\Projects\14896\CAD\Servers\14896SWR-PipeNetwork.dwg
14896	14896	14896	14896	14896	14896
EC-1	EC-1	EC-1	EC-1	EC-1	EC-1

**EROSION CONTROL NOTES:**

EROSION CONTROL MEASURES SHALL BE IN PLACE PRIOR TO ANY OTHER CONSTRUCTION ACTIVITY.

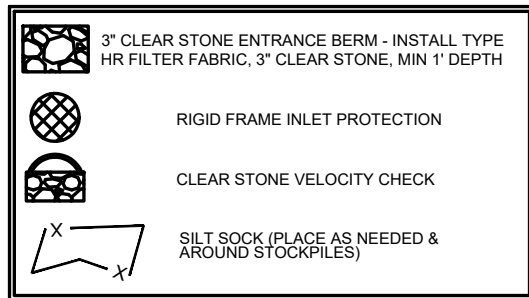
THE CONTRACTOR IS RESPONSIBLE FOR THE CONSTRUCTION AND MAINTENANCE OF ALL EROSION CONTROL MEASURES UNTIL FINAL ACCEPTANCE BY THE CITY OF MADISON.

THE CONTRACTOR SHALL INSTALL AND MAINTAIN EROSION CONTROL MEASURES IN ACCORDANCE WITH THE WDNR SOC STANDARDS AND CITY OF MADISON STANDARD SPECIFICATIONS.

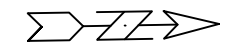
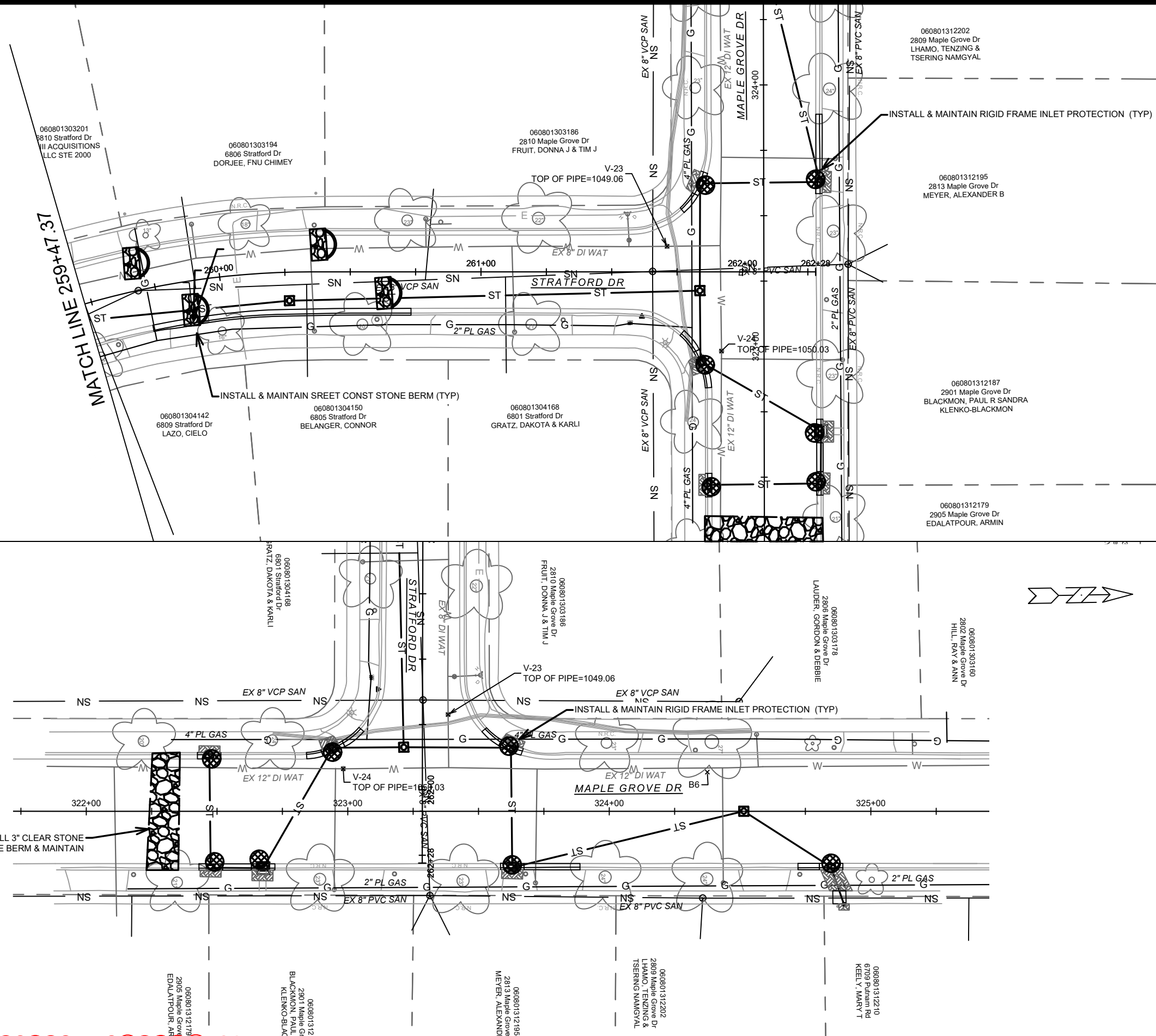
THE CONTRACTOR SHALL PROVIDE STREET CLEANING AS NEEDED ON A DAILY BASIS TO KEEP TRACKING TO A MINIMUM.

INLET PROTECTION SHALL BE INSTALLED WITHIN THE CONSTRUCTION LIMITS. ADDITIONAL INLET PROTECTION SHALL BE INSTALLED AS DIRECTED.

POLYMER SHALL BE APPLIED TO DISTURBED AREAS AS DIRECTED BY THE CONSTRUCTION ENGINEER.



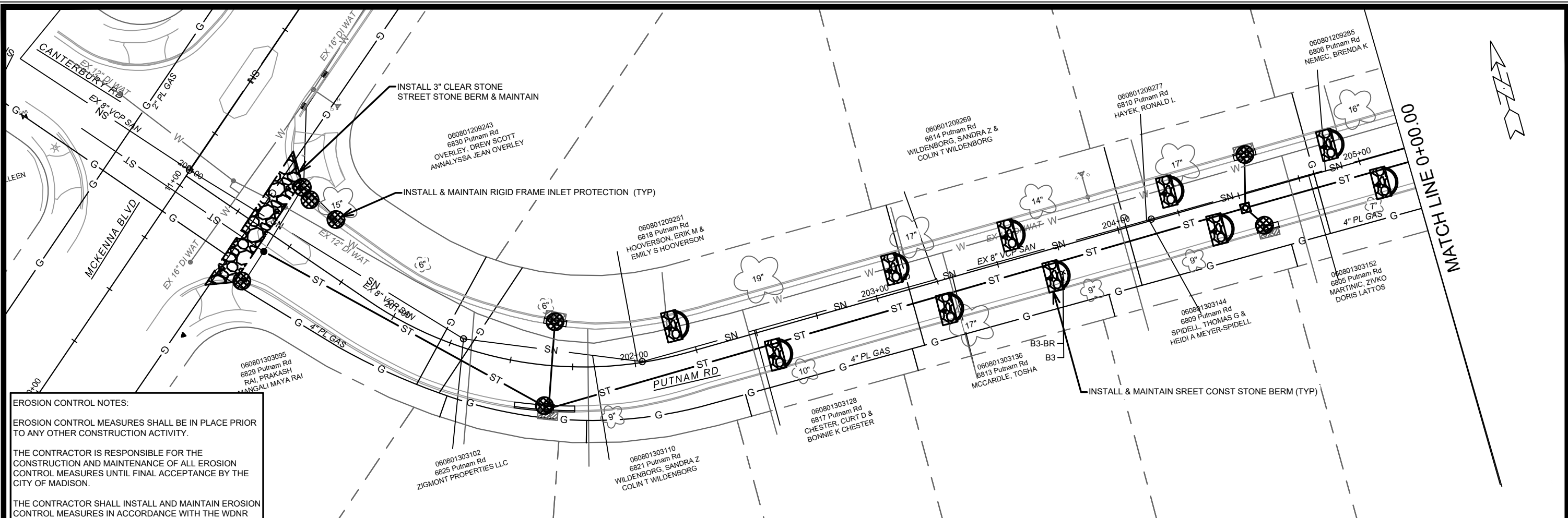
**REVISION 1 NOTES:**  
- ALIGNMENTS CHANGED TO MATCH RESURFACING CL



14896	14896	14896	14896	14896	14896
MADISON, WI	MADISON, WI	MADISON, WI	MADISON, WI	MADISON, WI	MADISON, WI
2024 RESURFACING	2024 RESURFACING	2024 RESURFACING	2024 RESURFACING	2024 RESURFACING	2024 RESURFACING
EROSION CONTROL - STRATFORD DR & MAPLE GROVE DR	EROSION CONTROL - STRATFORD DR & MAPLE GROVE DR	EROSION CONTROL - STRATFORD DR & MAPLE GROVE DR	EROSION CONTROL - STRATFORD DR & MAPLE GROVE DR	EROSION CONTROL - STRATFORD DR & MAPLE GROVE DR	EROSION CONTROL - STRATFORD DR & MAPLE GROVE DR
14896	14896	14896	14896	14896	14896
EC-2	EC-2	EC-2	EC-2	EC-2	EC-2

CONTRACT NO: 8736  
 M:\DESIGN\Projects\14896\CAD\Drawings\14896SWR-PipeNetwork.dwg  
 Scale: 1" = 40'  
 Date: 5/22/2024 12:46 PM  
 Designed By: DAO  
 REVISION MARK REV1 DATE 5/15/24 DAO BY  
 REVISION REVISION DATE 5/15/24 DAO BY  
 14896  
 EC-2





**EROSION CONTROL NOTES:**

EROSION CONTROL MEASURES SHALL BE IN PLACE PRIOR TO ANY OTHER CONSTRUCTION ACTIVITY.

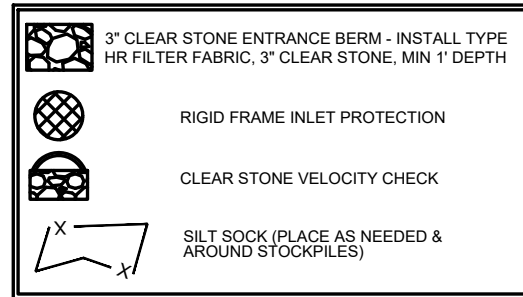
THE CONTRACTOR IS RESPONSIBLE FOR THE CONSTRUCTION AND MAINTENANCE OF ALL EROSION CONTROL MEASURES UNTIL FINAL ACCEPTANCE BY THE CITY OF MADISON.

THE CONTRACTOR SHALL INSTALL AND MAINTAIN EROSION CONTROL MEASURES IN ACCORDANCE WITH THE WDNR SOC STANDARDS AND CITY OF MADISON STANDARD SPECIFICATIONS.

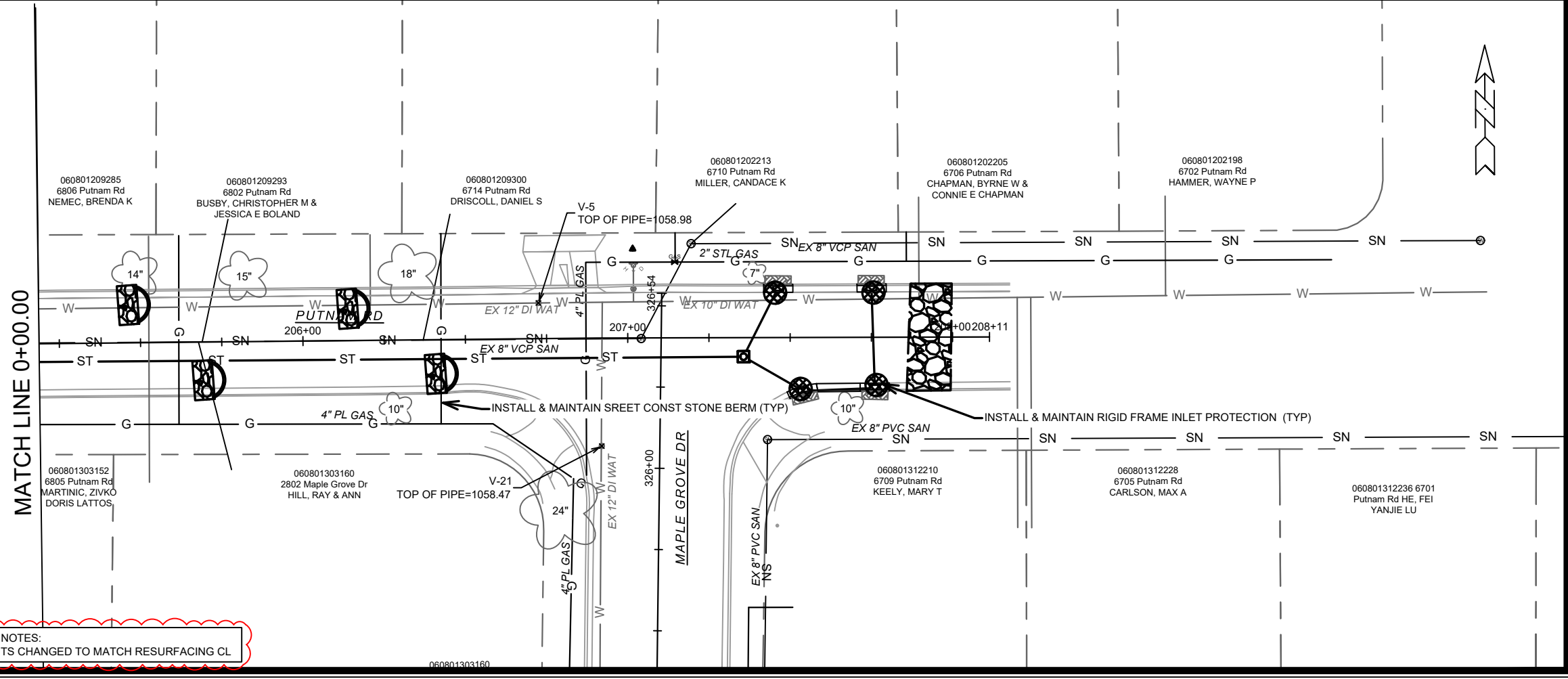
THE CONTRACTOR SHALL PROVIDE STREET CLEANING AS NEEDED ON A DAILY BASIS TO KEEP TRACKING TO A MINIMUM.

INLET PROTECTION SHALL BE INSTALLED WITHIN THE CONSTRUCTION LIMITS. ADDITIONAL INLET PROTECTION SHALL BE INSTALLED AS DIRECTED.

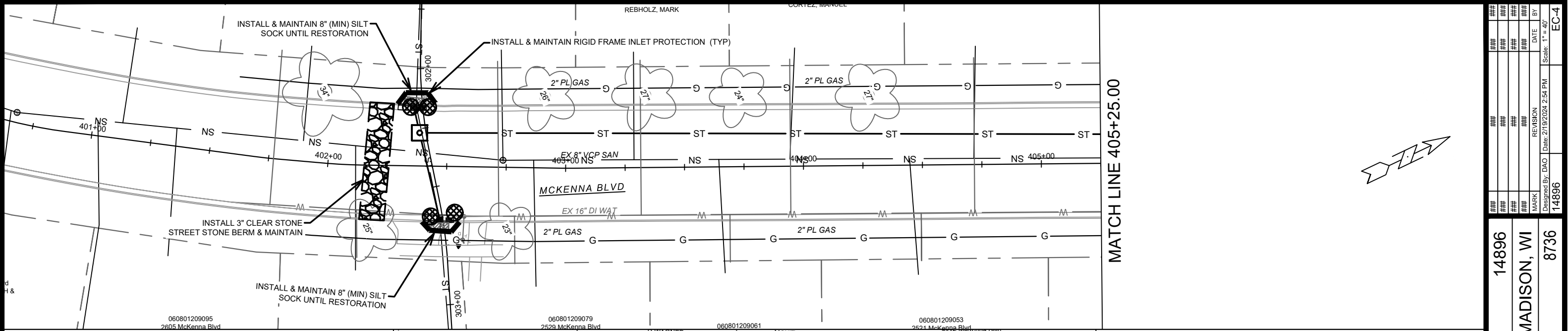
POLYMER SHALL BE APPLIED TO DISTURBED AREAS AS DIRECTED BY THE CONSTRUCTION ENGINEER.



**REVISION 1 NOTES:**  
- ALIGNMENTS CHANGED TO MATCH RESURFACING CL



14896	14896	14896	14896	14896	14896
MADISON, WI	MADISON, WI	MADISON, WI	MADISON, WI	MADISON, WI	MADISON, WI
8736	8736	8736	8736	8736	8736
CONTRACT NO:	CONTRACT NO:	CONTRACT NO:	CONTRACT NO:	CONTRACT NO:	CONTRACT NO:
EROSION CONTROL - PUTNAM RD	EROSION CONTROL - PUTNAM RD	EROSION CONTROL - PUTNAM RD	EROSION CONTROL - PUTNAM RD	EROSION CONTROL - PUTNAM RD	EROSION CONTROL - PUTNAM RD
2024 RESURFACING	2024 RESURFACING	2024 RESURFACING	2024 RESURFACING	2024 RESURFACING	2024 RESURFACING
M:\DESIGN\Projects\14896\CAD\Sewers\14896SWR-PipeNetwork.dwg	M:\DESIGN\Projects\14896\CAD\Sewers\14896SWR-PipeNetwork.dwg	M:\DESIGN\Projects\14896\CAD\Sewers\14896SWR-PipeNetwork.dwg	M:\DESIGN\Projects\14896\CAD\Sewers\14896SWR-PipeNetwork.dwg	M:\DESIGN\Projects\14896\CAD\Sewers\14896SWR-PipeNetwork.dwg	M:\DESIGN\Projects\14896\CAD\Sewers\14896SWR-PipeNetwork.dwg
14896	14896	14896	14896	14896	14896
EC-3	EC-3	EC-3	EC-3	EC-3	EC-3



**EROSION CONTROL NOTES:**

EROSION CONTROL MEASURES SHALL BE IN PLACE PRIOR TO ANY OTHER CONSTRUCTION ACTIVITY.

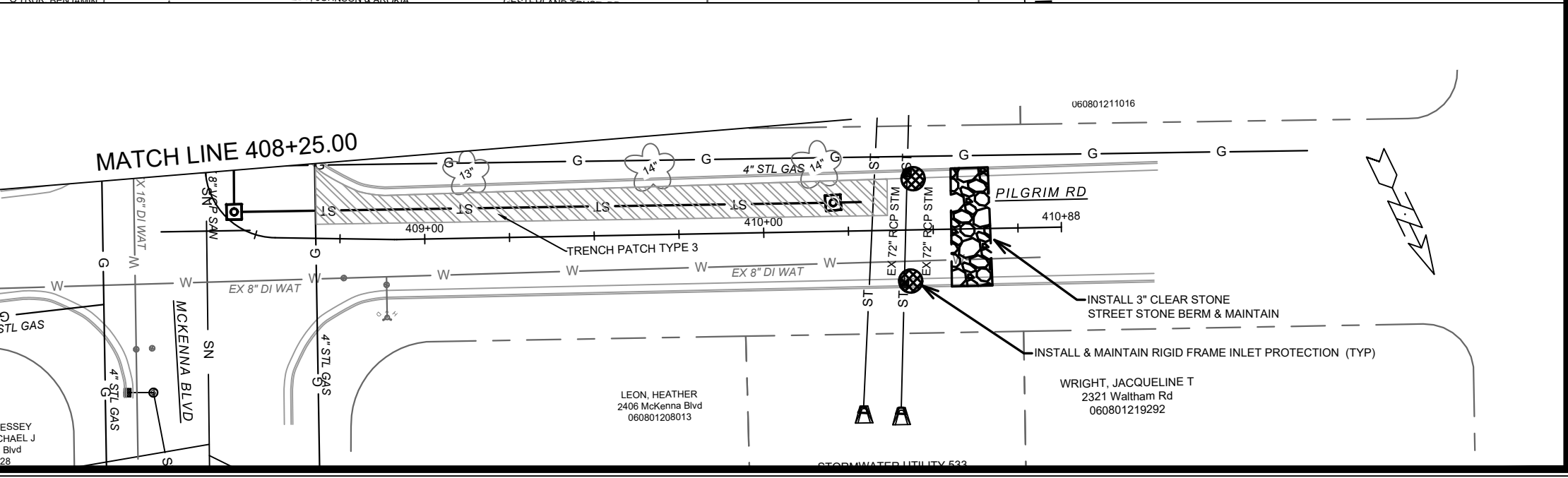
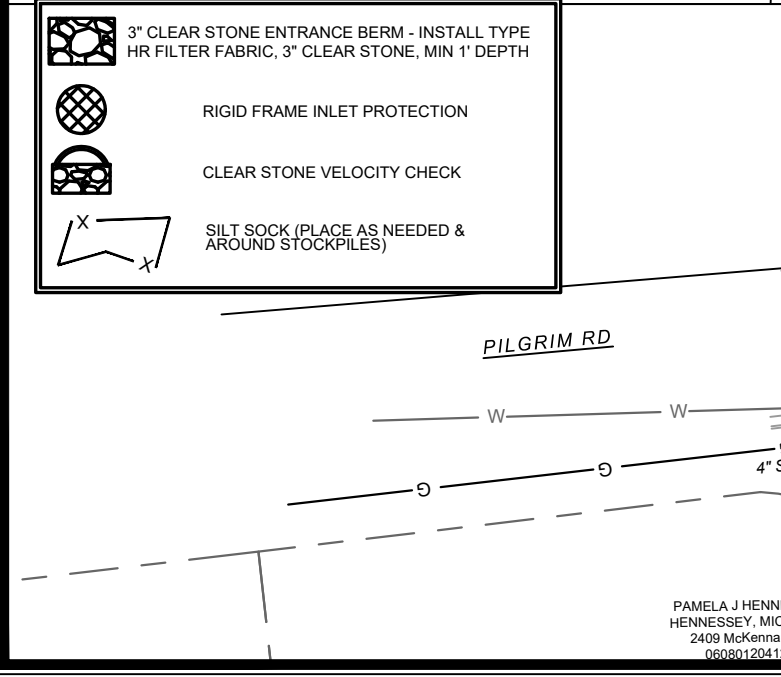
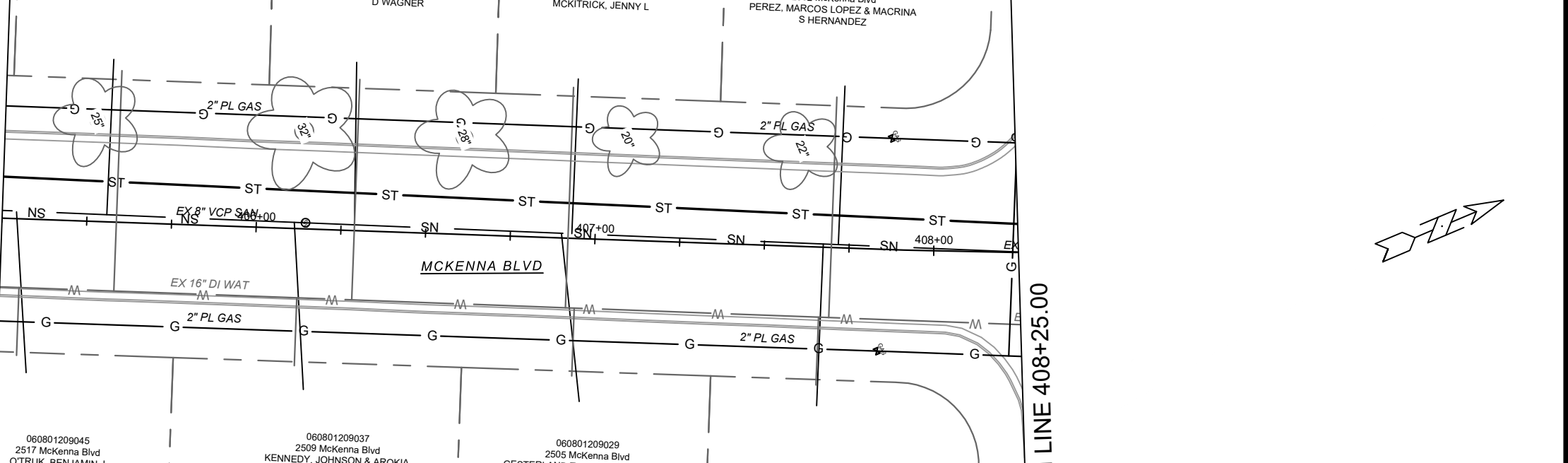
THE CONTRACTOR IS RESPONSIBLE FOR THE CONSTRUCTION AND MAINTENANCE OF ALL EROSION CONTROL MEASURES UNTIL FINAL ACCEPTANCE BY THE CITY OF MADISON.


THE CONTRACTOR SHALL INSTALL AND MAINTAIN EROSION CONTROL MEASURES IN ACCORDANCE WITH THE WDNR SOC STANDARDS AND CITY OF MADISON STANDARD SPECIFICATIONS.


THE CONTRACTOR SHALL PROVIDE STREET CLEANING AS NEEDED ON A DAILY BASIS TO KEEP TRACKING TO A MINIMUM.

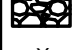
INLET PROTECTION SHALL BE INSTALLED WITHIN THE CONSTRUCTION LIMITS. ADDITIONAL INLET PROTECTION SHALL BE INSTALLED AS DIRECTED.

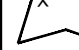
POLYMER SHALL BE APPLIED TO DISTURBED AREAS AS DIRECTED BY THE CONSTRUCTION ENGINEER.



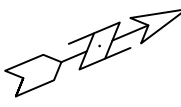
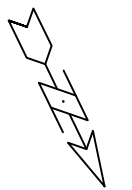


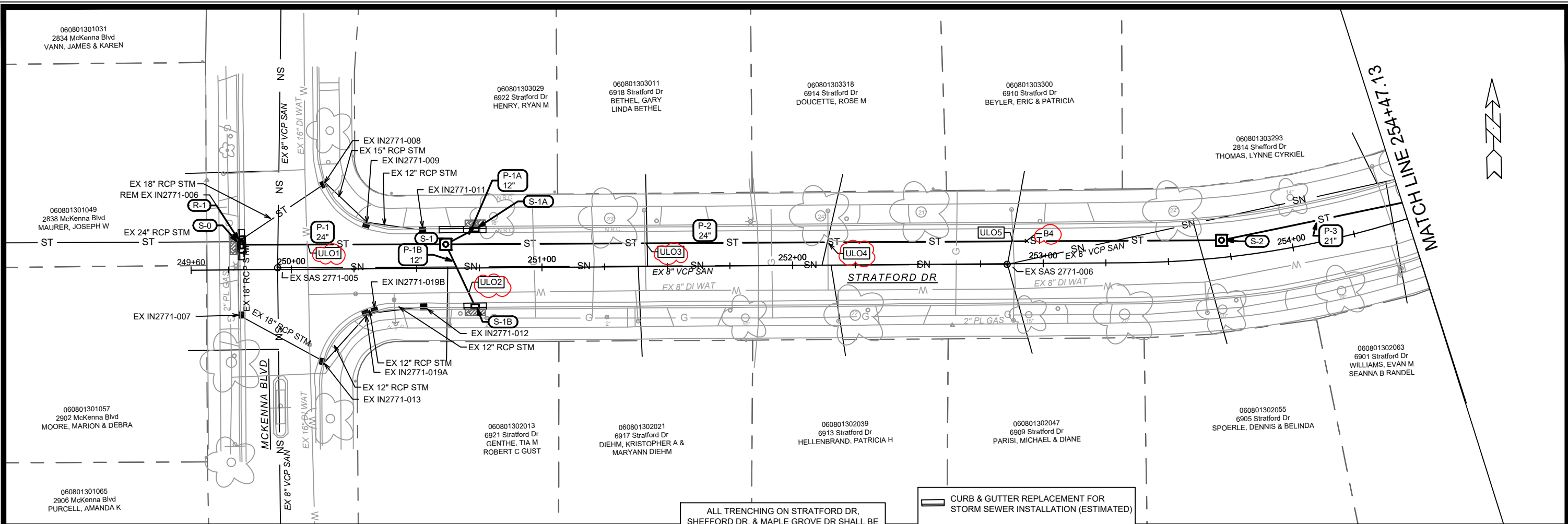
 3" CLEAR STONE ENTRANCE BERM - INSTALL TYPE HR FILTER FABRIC, 3" CLEAR STONE, MIN 1' DEPTH

 RIGID FRAME INLET PROTECTION

 CLEAR STONE VELOCITY CHECK

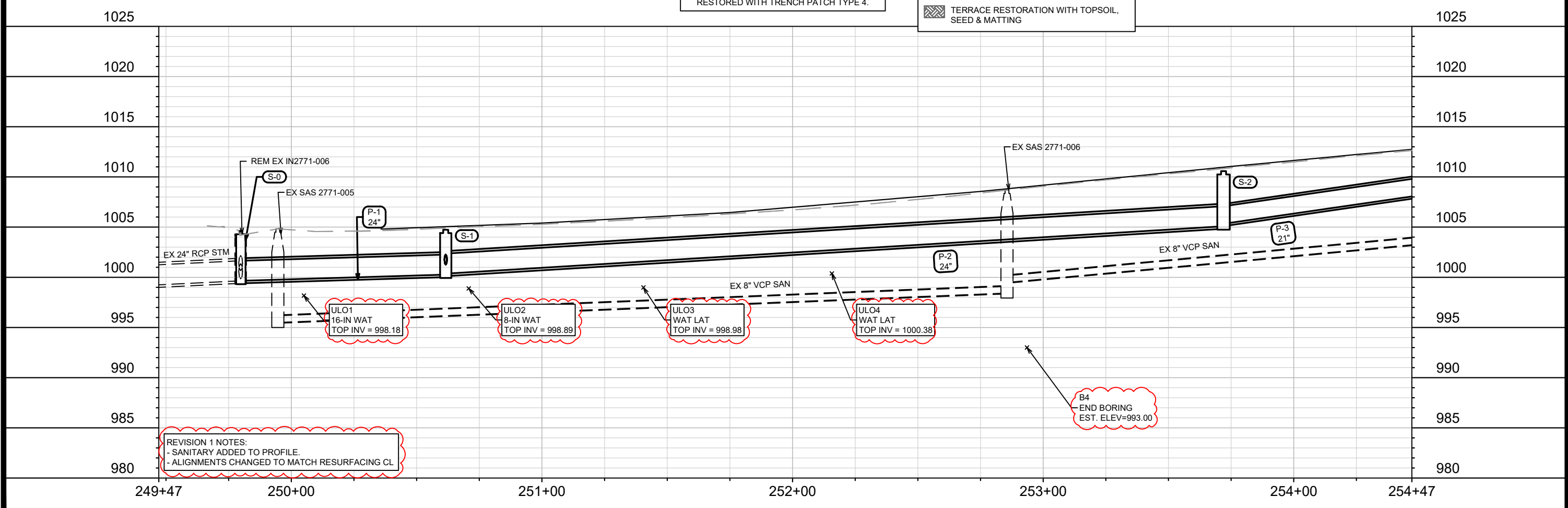
 SILT SOCK (PLACE AS NEEDED & AROUND STOCKPILES)

####	####	####	####	####	####
MARK	REVISION	DATE	BY	DATE	BY
14896		2/19/2024 2:54 PM		2/19/2024 2:54 PM	
DESIGNED BY: DAO		DATE		SCALE: 1" = 40'	
14896		8736		EC-4	
EROSION CONTROL - MCKENNA BLVD & PILGRIM RD			CONTRACT NO:		
2024 RESURFACING			14896		
M:\DESIGN\Projects\14896\CAD\Sewers\14896SWR-PipeNetwork.dwg					
					
					
					
					
STORMWATER UTILITY 533					



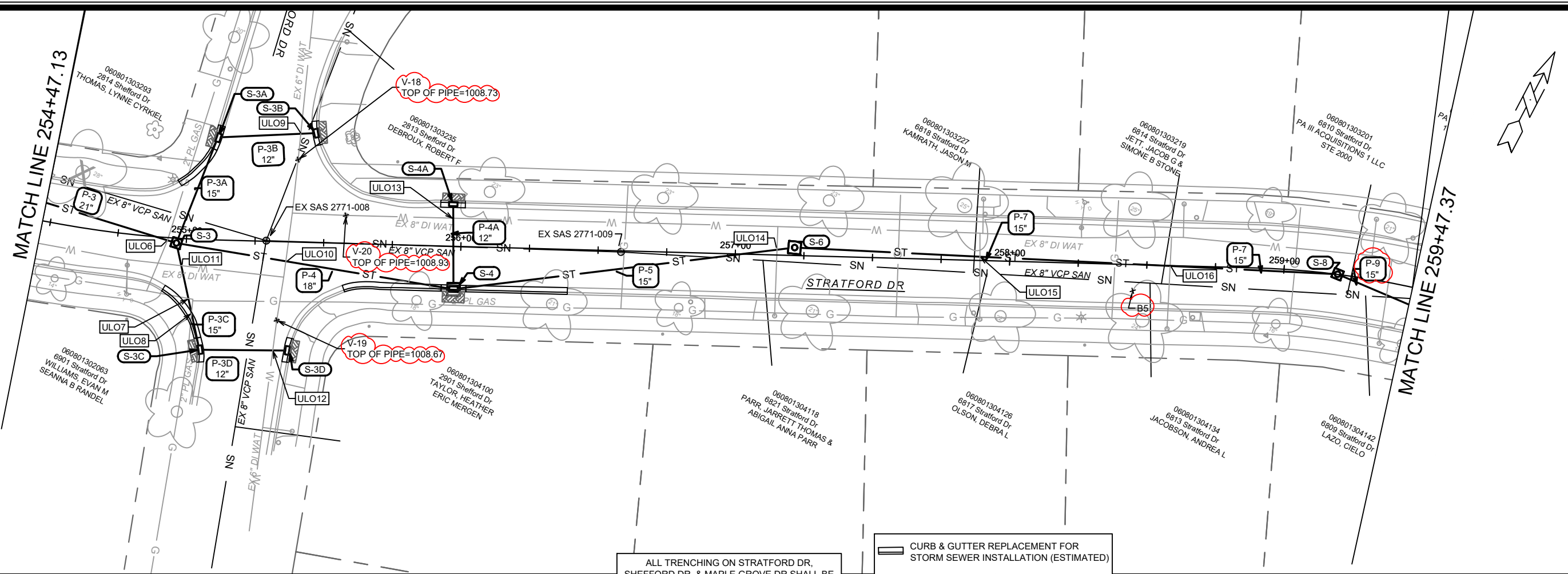
ALL TRENCHING ON STRATFORD DR, SHEFFORD DR, & MAPLE GROVE DR SHALL BE RESTORED WITH TRENCH PATCH TYPE 4.

- CURB & GUTTER REPLACEMENT FOR STORM SEWER INSTALLATION (ESTIMATED)
- TERRACE RESTORATION WITH TOPSOIL, SEED & MATTING



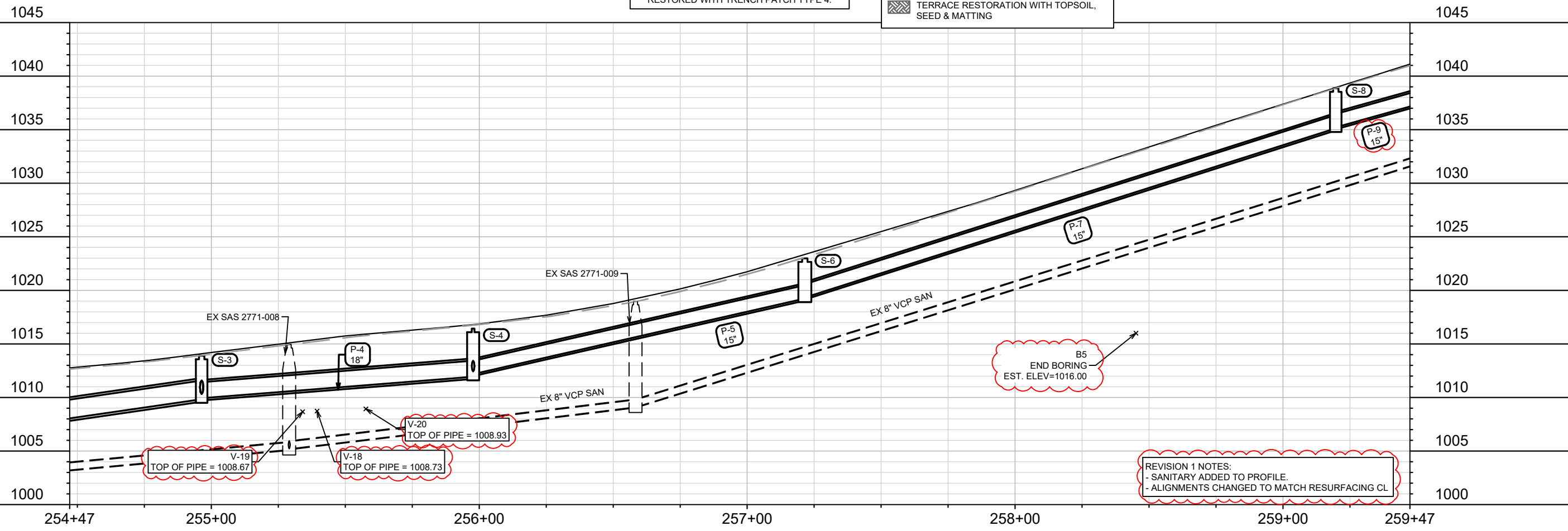
REVISION 1 NOTES:  
 - SANITARY ADDED TO PROFILE.  
 - ALIGNMENTS CHANGED TO MATCH RESURFACING CL

14896	MADISON, WI	8736	U-1
STORM SEWER PLAN & PROFILE - STRATFORD DR			
2024 RESURFACING			
M:\DESIGN\Projects\14896\CAD\Sewers\14896SWR-PipeNetwork.dwg			
14896			
U-1			



ALL TRENCHING ON STRATFORD DR, SHEFFORD DR, & MAPLE GROVE DR SHALL BE RESTORED WITH TRENCH PATCH TYPE 4.

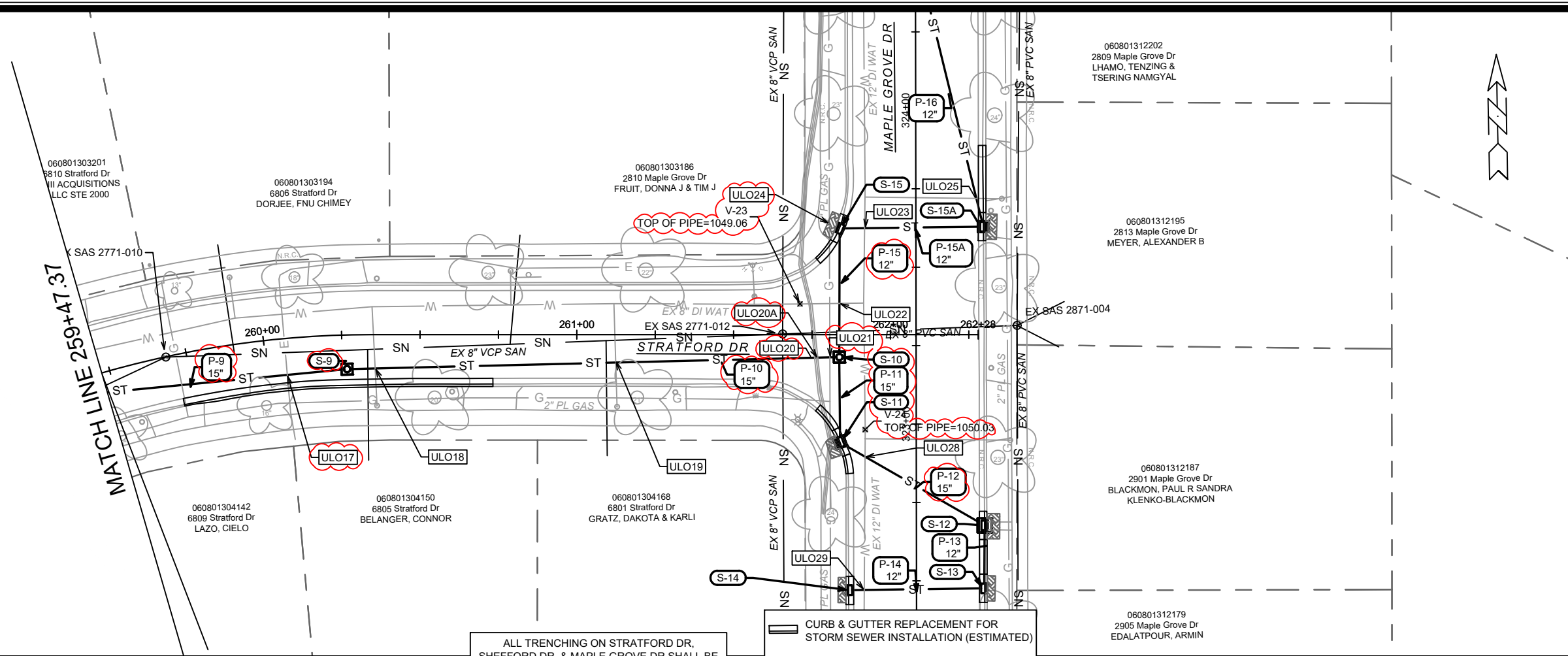
- CURB & GUTTER REPLACEMENT FOR STORM SEWER INSTALLATION (ESTIMATED)
- TERRACE RESTORATION WITH TOPSOIL, SEED & MATTING



REVISION 1 NOTES:  
 - SANITARY ADDED TO PROFILE.  
 - ALIGNMENTS CHANGED TO MATCH RESURFACING CL

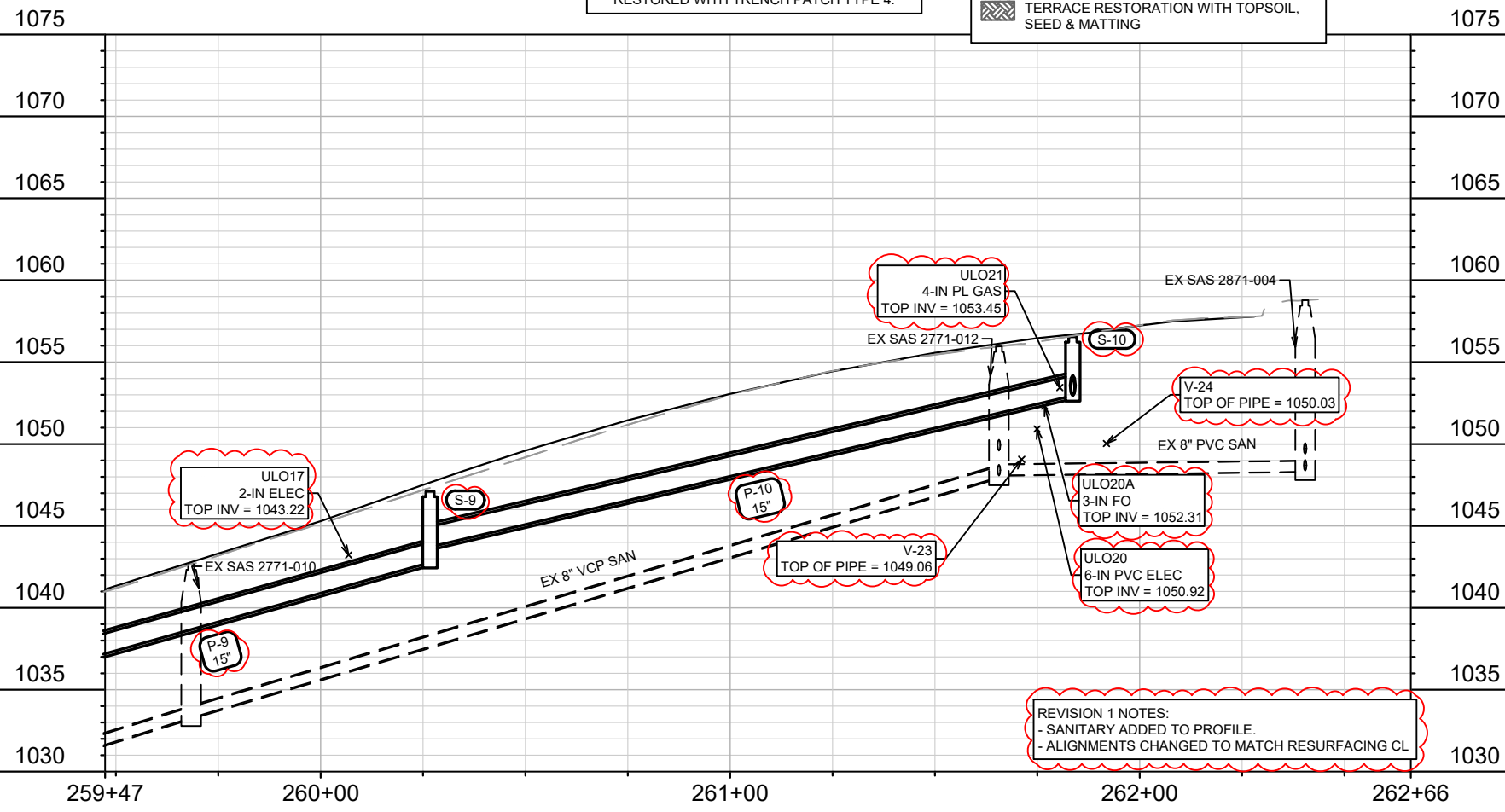
14896	14896	14896	14896	14896	14896
MADISON, WI	MADISON, WI	MADISON, WI	MADISON, WI	MADISON, WI	MADISON, WI
2024 RESURFACING	2024 RESURFACING	2024 RESURFACING	2024 RESURFACING	2024 RESURFACING	2024 RESURFACING
14896	14896	14896	14896	14896	14896
U-2	U-2	U-2	U-2	U-2	U-2

STORM SEWER PLAN & PROFILE - STRATFORD DR  
 2024 RESURFACING  
 M:\DESIGN\Projects\14896\CAD\Sewers\14896SWR-PipeNetwork.dwg  
 City of Madison Wisconsin logo  
 14896  
 U-2



ALL TRENCHING ON STRATFORD DR, SHEFFORD DR, & MAPLE GROVE DR SHALL BE RESTORED WITH TRENCH PATCH TYPE 4.

CURB & GUTTER REPLACEMENT FOR STORM SEWER INSTALLATION (ESTIMATED)  
 TERRACE RESTORATION WITH TOPSOIL, SEED & MATTING



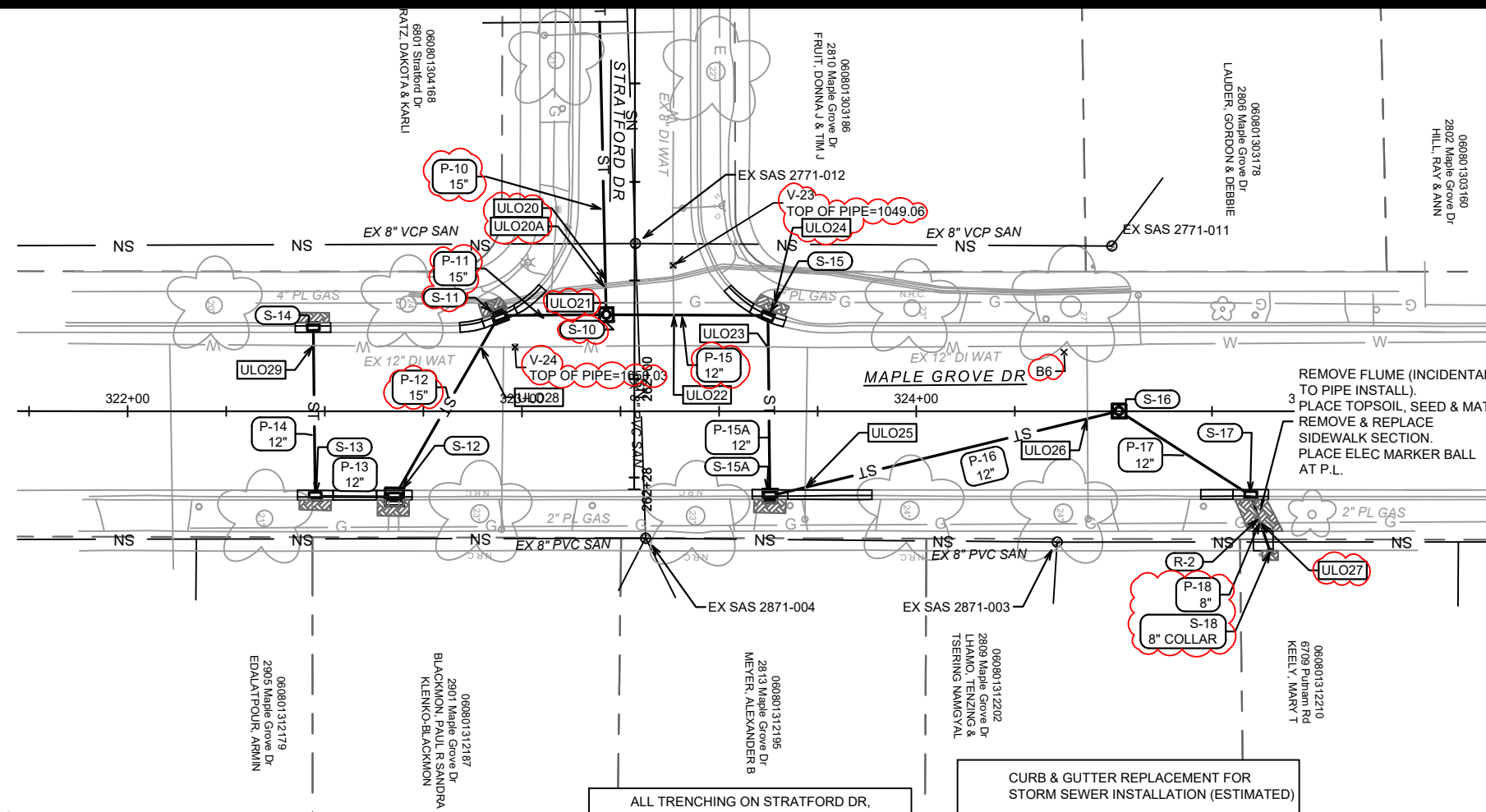
REVISION 1 NOTES:  
 - SANITARY ADDED TO PROFILE.  
 - ALIGNMENTS CHANGED TO MATCH RESURFACING CL

14896	14896	14896	14896	14896	14896	14896	14896	14896	14896
MADISON, WI	U-3	U-3	U-3	U-3	U-3	U-3	U-3	U-3	U-3
14896	8736	8736	8736	8736	8736	8736	8736	8736	8736
14896	U-3	U-3	U-3	U-3	U-3	U-3	U-3	U-3	U-3

CONTRACT NO: 8736  
 U-3  
 14896  
 U-3

STORM SEWER PLAN & PROFILE - STRATFORD DR  
 2024 RESURFACING  
 M:\DESIGN\Projects\14896\CAD\Sewers\14896SWR-PipeNetwork.dwg  
 CITY OF MADISON WISCONSIN  
 14896  
 U-3

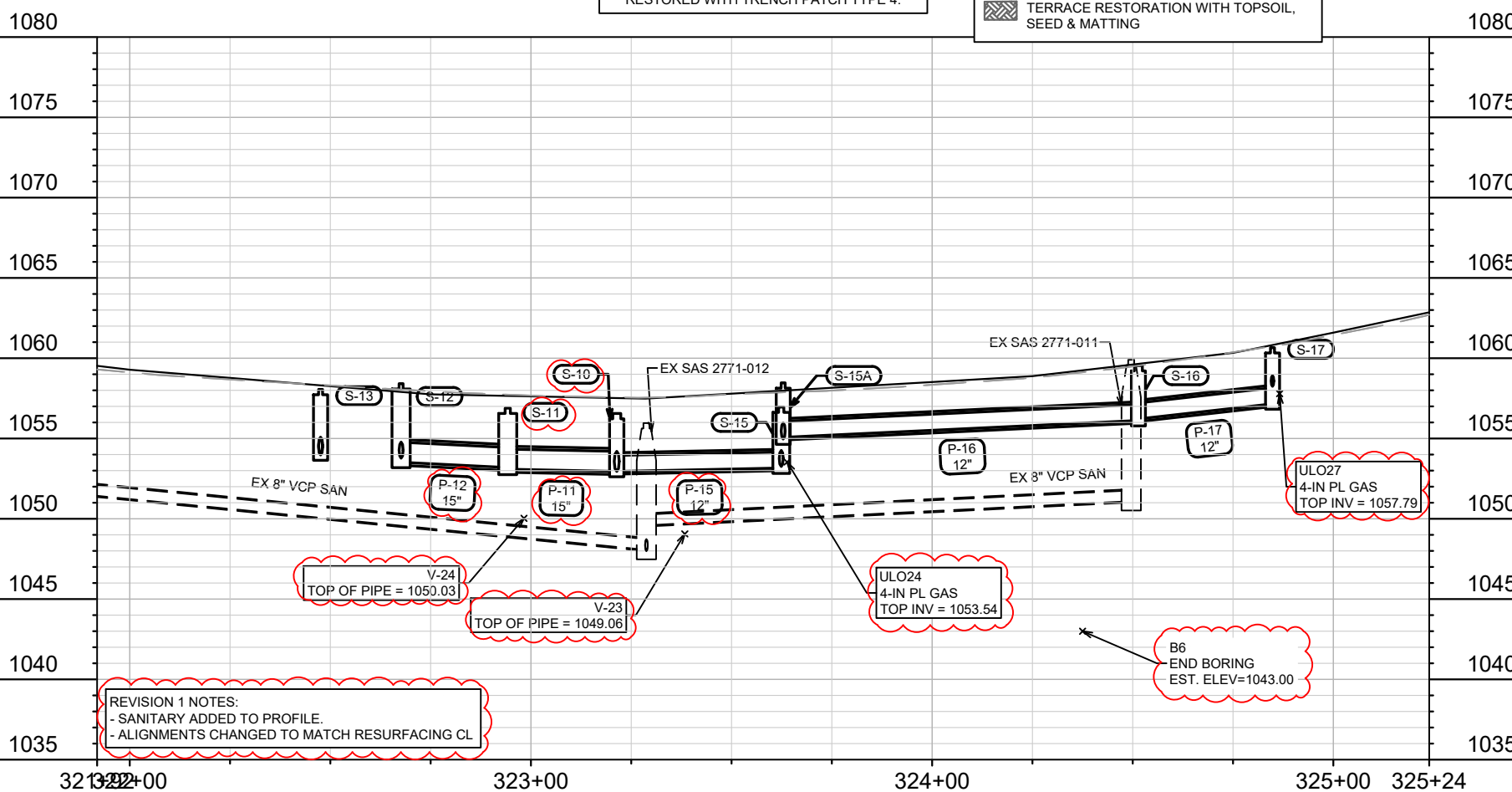




ALL TRENCHING ON STRATFORD DR, SHEFFORD DR, & MAPLE GROVE DR SHALL BE RESTORED WITH TRENCH PATCH TYPE 4.

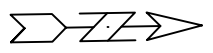
CURB & GUTTER REPLACEMENT FOR STORM SEWER INSTALLATION (ESTIMATED)

TERRACE RESTORATION WITH TOPSOIL, SEED & MATTING

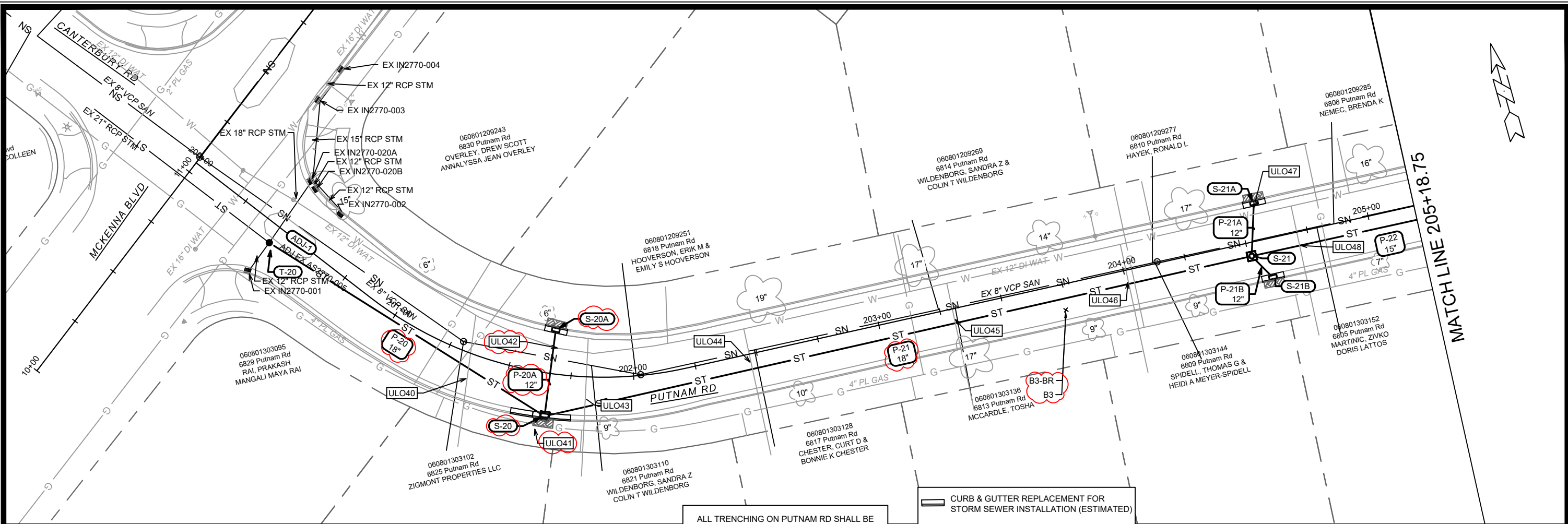


REVISION 1 NOTES:  
 - SANITARY ADDED TO PROFILE.  
 - ALIGNMENTS CHANGED TO MATCH RESURFACING CL

B6  
 END BORING  
 EST. ELEV=1043.00

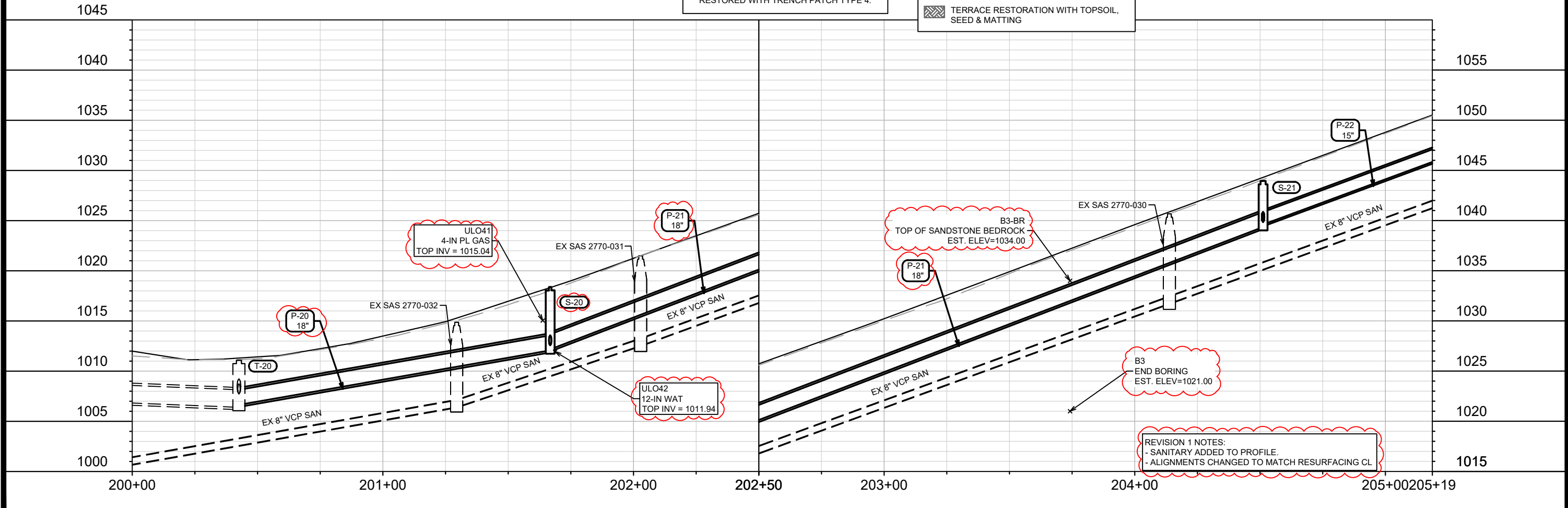


14896	14896	U-4
MADISON, WI	UJO & STM UPDATE	5/15/24
CONTRACT NO: 8736	REVISION	DATE
STORM SEWER PLAN & PROFILE - MAPLE GROVE DR	UJO & STM UPDATE	5/15/24
2024 RESURFACING	REVISION	DATE
M:\DESIGN\Projects\14896\CAD\Servers\14896SWR-PipeNetwork.dwg	UJO & STM UPDATE	5/15/24
CITY OF MADISON WISCONSIN	UJO & STM UPDATE	5/15/24
14896	UJO & STM UPDATE	5/15/24
U-4	UJO & STM UPDATE	5/15/24



ALL TRENCHING ON PUTNAM RD SHALL BE RESTORED WITH TRENCH PATCH TYPE 4.

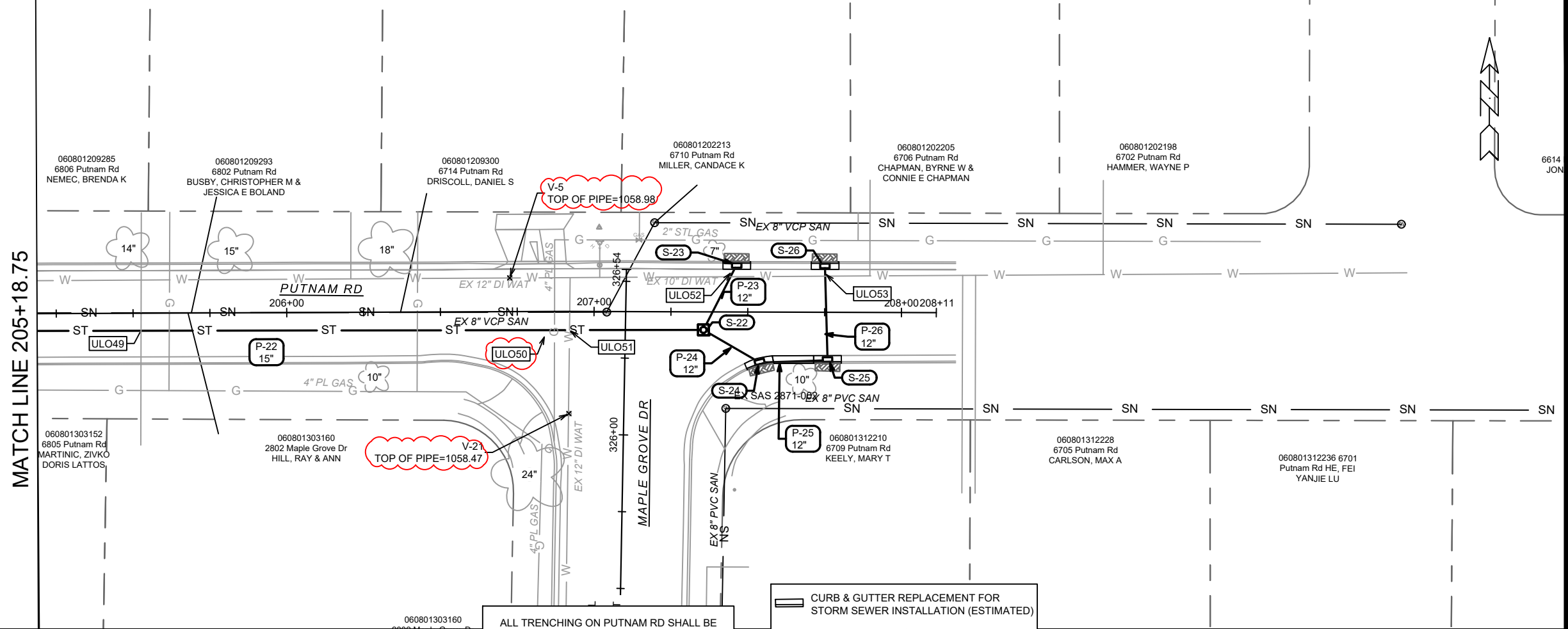
- CURB & GUTTER REPLACEMENT FOR STORM SEWER INSTALLATION (ESTIMATED)
- ▨ TERRACE RESTORATION WITH TOPSOIL, SEED & MATTING



REVISION 1 NOTES:  
 - SANITARY ADDED TO PROFILE.  
 - ALIGNMENTS CHANGED TO MATCH RESURFACING CL

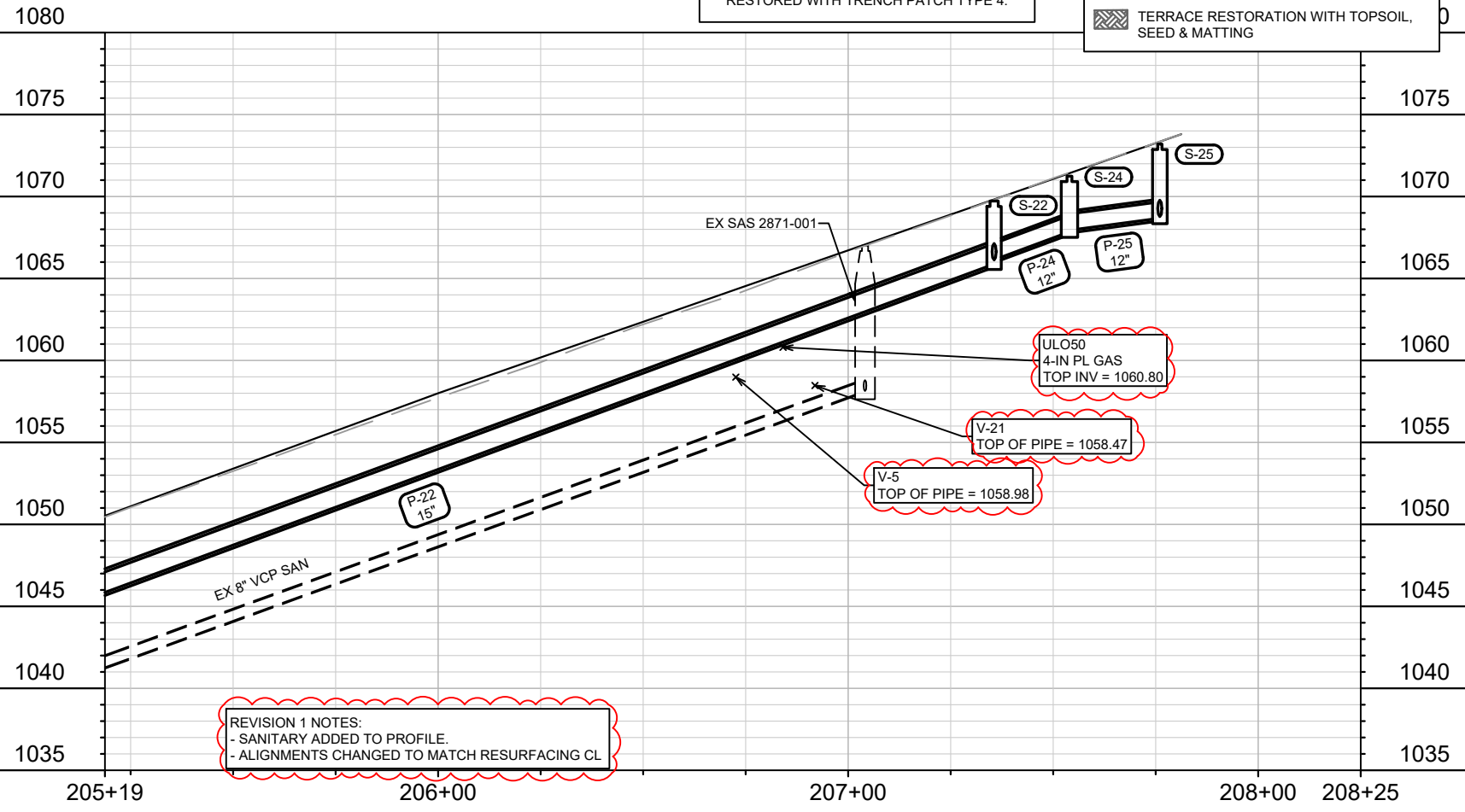
14896	MADISON, WI	8736	U-5
STORM SEWER PLAN & PROFILE - PUTNAM RD		2024 RESURFACING	
M:\DESIGN\Projects\14896\CAD\Sewers\14896SWR-PipeNetwork.dwg		14896	
U-5		U-5	

MATCH LINE 205+18.75



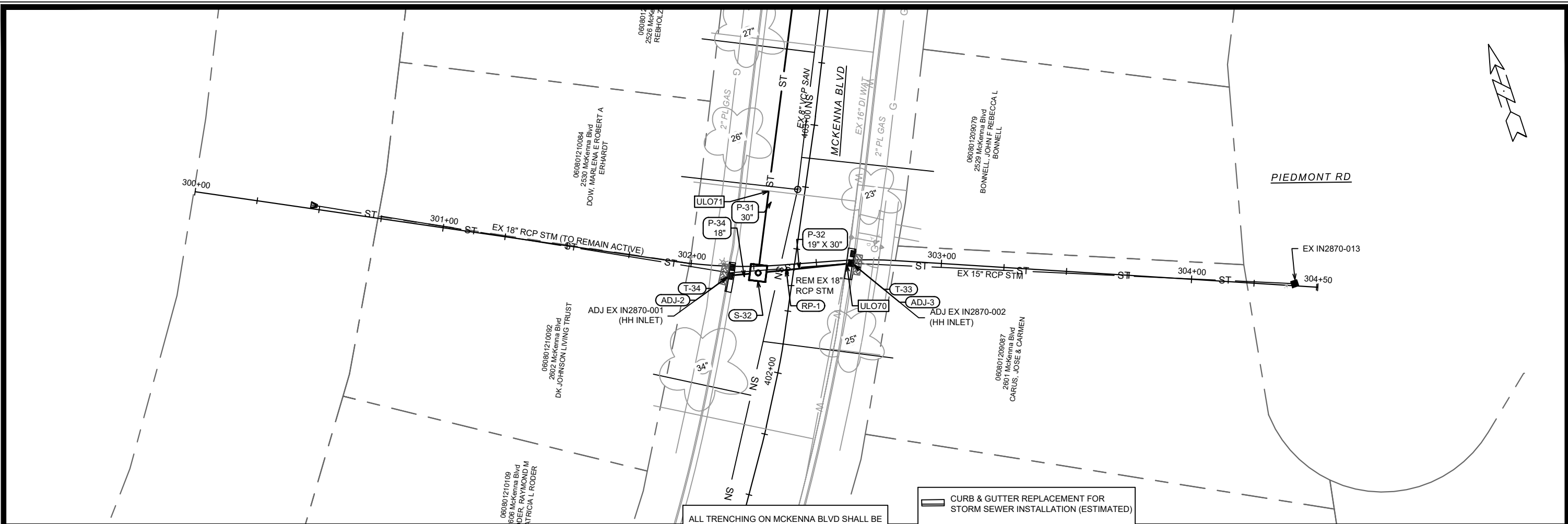
ALL TRENCHING ON PUTNAM RD SHALL BE RESTORED WITH TRENCH PATCH TYPE 4.

- CURB & GUTTER REPLACEMENT FOR STORM SEWER INSTALLATION (ESTIMATED)
- TERRACE RESTORATION WITH TOPSOIL, SEED & MATTING

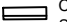



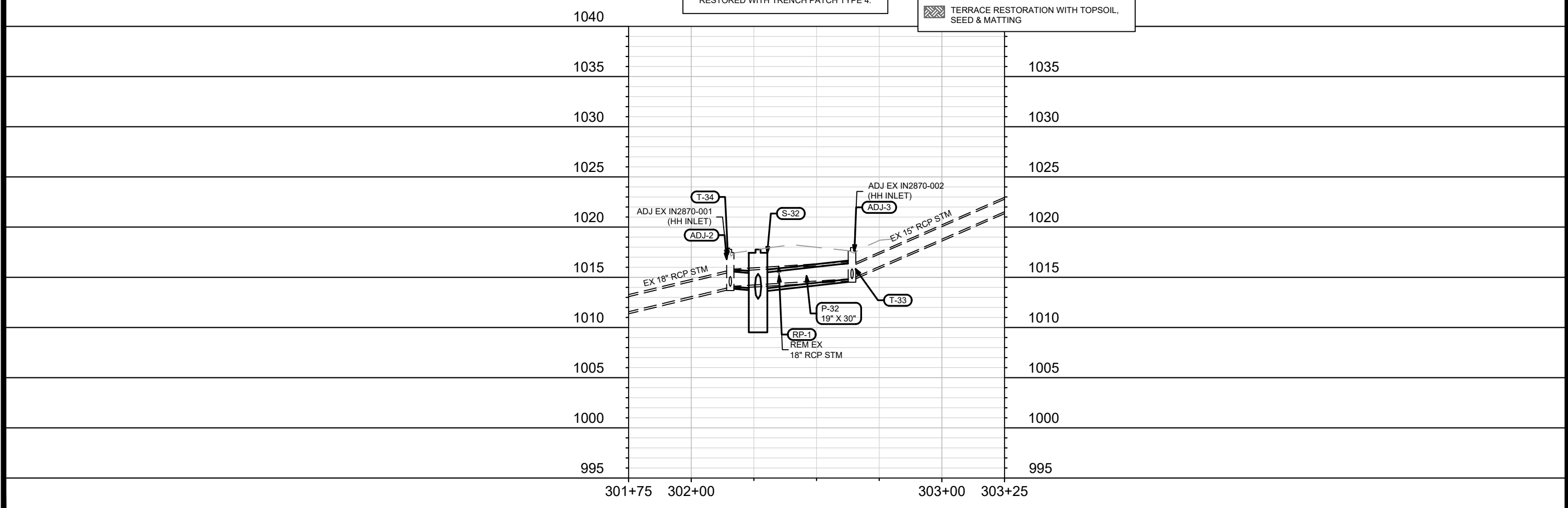
REVISION 1 NOTES:  
 - SANITARY ADDED TO PROFILE.  
 - ALIGNMENTS CHANGED TO MATCH RESURFACING CL

14896	MADISON, WI	8736	14896	U-6
STORM SEWER PLAN & PROFILE - PUTNAM RD				
2024 RESURFACING				
M:\DESIGN\Projects\14896\CAD\Sewers\14896SWR-PipeNetwork.dwg				
14896				
U-6				



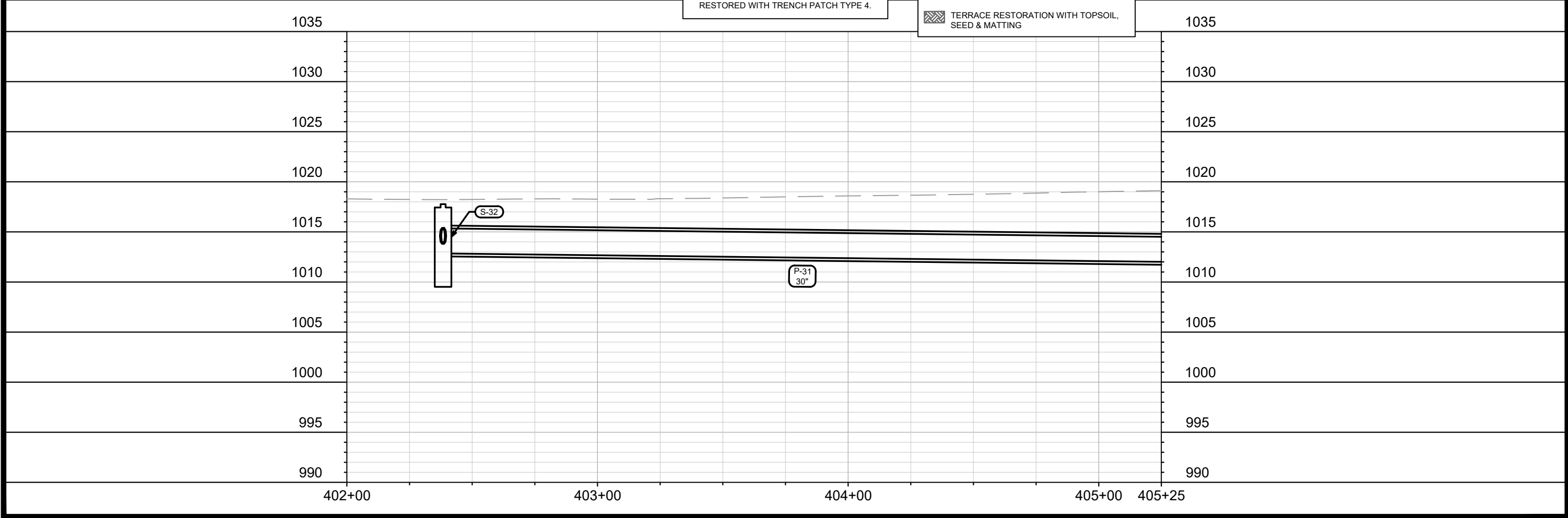
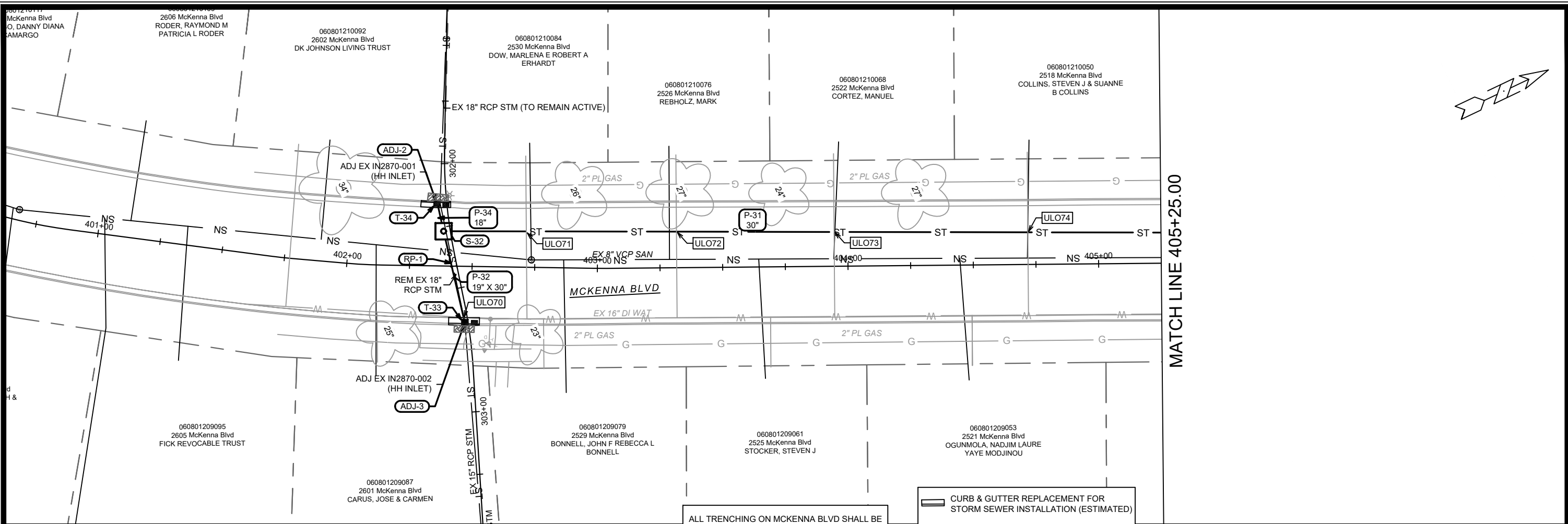
ALL TRENCHING ON MCKENNA BLVD SHALL BE RESTORED WITH TRENCH PATCH TYPE 4.

 CURB & GUTTER REPLACEMENT FOR STORM SEWER INSTALLATION (ESTIMATED)  
 TERRACE RESTORATION WITH TOPSOIL, SEED & MATTING



<b>14896</b> <b>MADISON, WI</b> <b>CONTRACT NO: 8736</b>	<b>14896</b> <b>2024 RESURFACING</b> <small>M:\DESIGN\Projects\14896\CAD\Sewers\14896SWR-PipeNetwork.dwg</small>	<b>14896</b> <b>U-7</b>
MARK: ### REVISION: ### DATE: ###	DESIGNED BY: DAO DATE: 2/19/2024 2:46 PM SCALE: 1" = 40'	BY: ### DATE: ### U-7





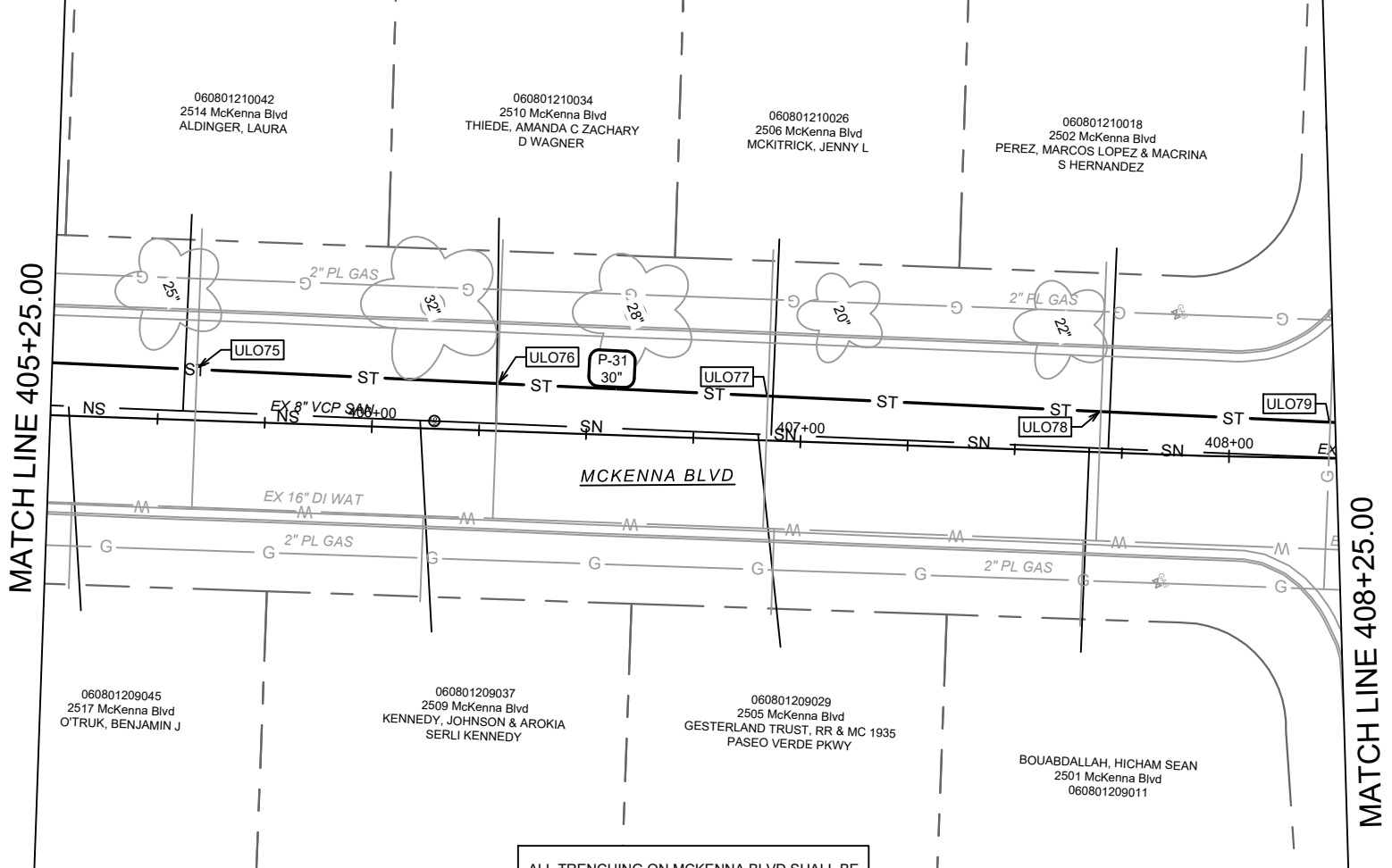
MATCH LINE 405+25.00

ALL TRENCHING ON MCKENNA BLVD SHALL BE RESTORED WITH TRENCH PATCH TYPE 4.

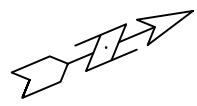
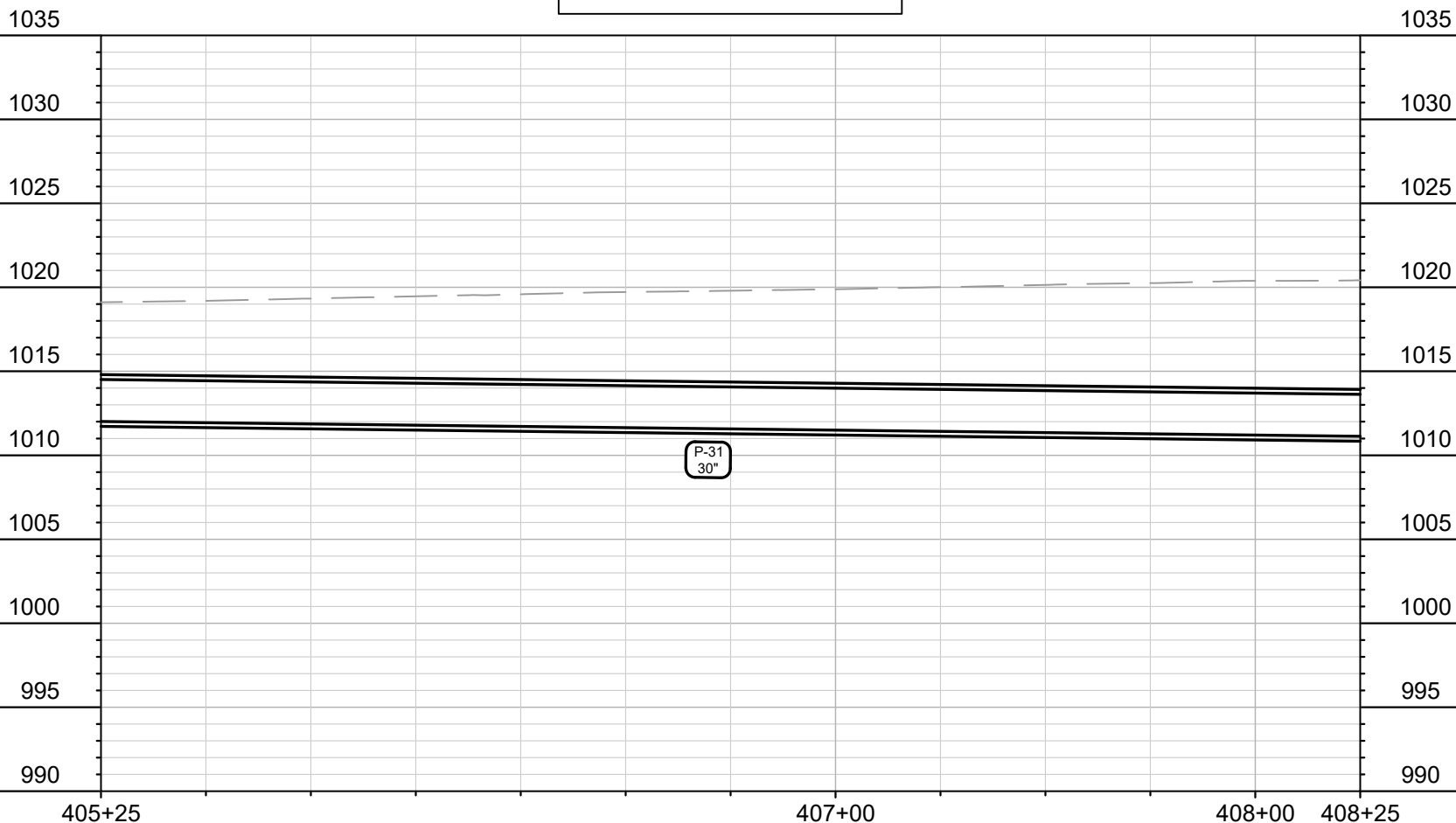
CURB & GUTTER REPLACEMENT FOR STORM SEWER INSTALLATION (ESTIMATED)  
 TERRACE RESTORATION WITH TOPSOIL, SEED & MATTING



14896	MADISON, WI	8736
CONTRACT NO: 14896		
<p>STORM SEWER PLAN &amp; PROFILE - MCKENNA BLVD</p> <p>2024 RESURFACING</p> <p>M:\DESIGN\Projects\14896\CAD\Sewers\14896SWR-PipeNetwork.dwg</p>		
14896		U-8



ALL TRENCHING ON MCKENNA BLVD SHALL BE RESTORED WITH TRENCH PATCH TYPE 4.

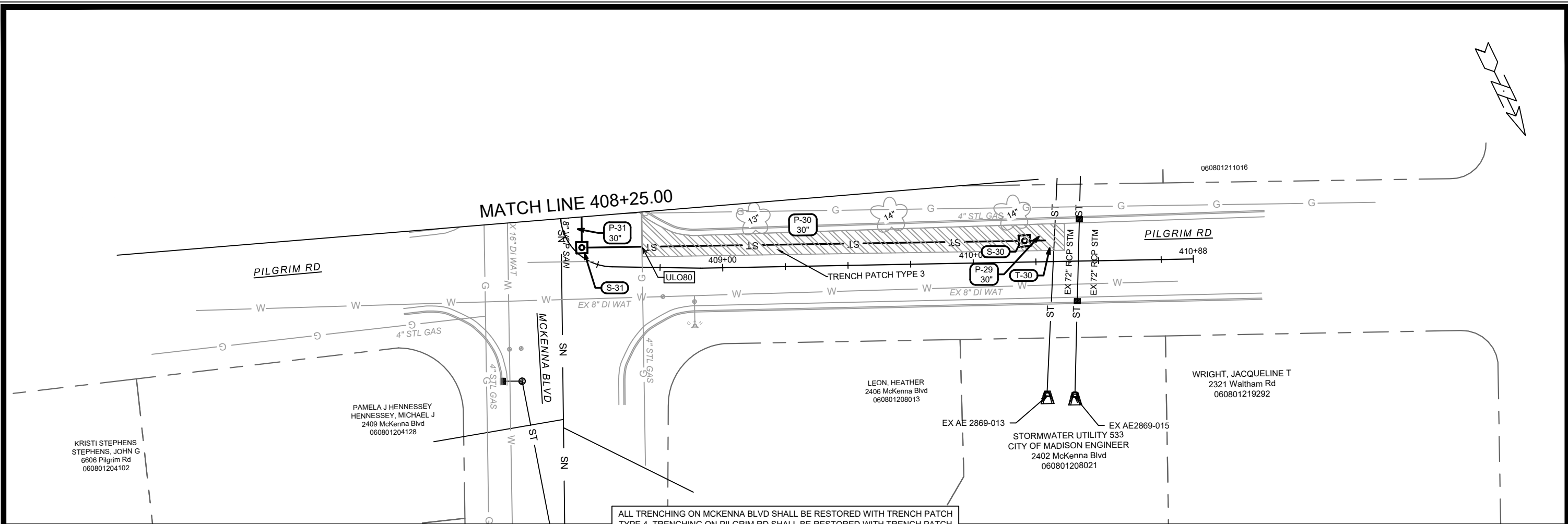


MARK	REVISION	DATE	BY
###	###	###	###
###	###	###	###
###	###	###	###
###	###	###	###

14896  
 MADISON, WI  
 CONTRACT NO: 8736

STORM SEWER PLAN & PROFILE - MCKENNA BLVD  
 2024 RESURFACING  
 M:\DESIGN\Projects\14896\CAD\Sewers\14896SWR-PipeNetwork.dwg

14896  
 U-9



ALL TRENCHING ON MCKENNA BLVD SHALL BE RESTORED WITH TRENCH PATCH TYPE 4. TRENCHING ON PILGRIM RD SHALL BE RESTORED WITH TRENCH PATCH TYPE 3 WHERE SHOWN IN PLAN.

1035

1030

1025

1020

1015

1010

1005

1000

995

990

408+25      409+00      410+00      410+50

MARK	REVISION	DATE	BY
###	###	###	###
###	###	###	###
###	###	###	###
###	###	###	###

Designed By: DAO    Date: 2/19/2024 2:46 PM    Scale: 1" = 40'

14896

14896

MADISON, WI

8736

CONTRACT NO:

STORM SEWER PLAN & PROFILE - MCKENNA BLVD

2024 RESURFACING

M:\DESIGN\Projects\14896\CAD\Sewers\14896SWR-PipeNetwork.dwg



14896

U-10





# STORM SEWER SCHEDULE

\* REVISION 1 - 5/15/2024 DAO

2024 RESURFACING PROJECT NO. 14896	SHEET NO. U-12
STORM SEWER SCHEDULE	
CITY OF MADISON	

U-12

\* STRUCTURE STATION, OFFSET UPDATED TO PAVING CL ALIGNMENTS

## PROPOSED STORM STRUCTURES

STRUC. NO.	STATION	LOCATION (OFFSET)	TYPE	TOP OF CASTING	E.I.	DEPTH	NOTES
<b>PUTNAM RD</b>							
T-20	202+75.45	RT-7.42	18" STORM TAP	-	1006.64	-	TAP AT ADJ-1
* S-20	203+98.84	LT-19.36	3X3 STORM SAS	1018.39	1012.07	6.32	W/R-3067-7004-V
* S-20A	203+97.71	LT-15.62	H INLET	1017.75	1013.56	4.19	W/R-3067-7004-V
S-21	206+82.44	RT-6.22	3X3 STORM SAS	1043.94	1039.36	4.58	W/R-1050-1550-0054
S-21A	206+88.01	LT-14.58	H INLET	1044.59	1041.08	3.51	W/R-3067-7004-V
S-21B	206+88.90	RT-16.52	H INLET	1044.68	1041.18	3.50	W/R-3067-7004-V
S-22	209+66.86	RT-7.08	3X3 STORM SAS	1069.73	1065.88	3.85	W/R-1050-1550-0054
S-23	209+77.65	LT-14.18	H INLET	1070.75	1067.25	3.50	W/R-3067-7004-V
S-24	209+85.23	RT-17.68	H INLET	1071.24	1067.84	3.40	W/R-3067-7004-V
S-25	210+07.27	RT-16.88	H INLET	1073.20	1068.67	4.53	W/R-3067-7004-V
S-26	210+06.35	LT-14.10	H INLET	1073.30	1069.80	3.50	W/R-3067-7004-V
<b>* MCKENNA BLVD &amp; PILGRIM RD</b>							
T-30	410+32.08	LT-8.52	30" STORM TAP	-	1004.81	-	TAP AT SPRINGLINE
S-30	410+20.63	LT-8.47	4X4 STORM SAS	1016.23	1005.05	11.18	FP; W/R-1550-0054
S-31	408+40.47	LT-2.73	4X4 STORM SAS	1020.28	1010.98	9.30	W/R-1550-0054
S-32	402+38.39	LT-13.88	6X6 CATCH BASIN W/3' SUMF	1017.77	1012.85	4.92	FP; W/TWO-R-1550-0054; [3]
T-33	402+47.44	RT-22.50	19"X30" STORM TAP	-	1014.85	-	TAP AT ADJ-3
T-34	302+15.62	RT-3.71	18" STORM TAP	-	1014.09	-	TAP AT ADJ-2

## PROPOSED STORM PIPES

PIPE NO.	FROM (DNSTM)	TO (UPSTM)	DISCH. E.I.	INLET E.I.	PLAN (PAY) LGTH (FT)	PIPE LGTH (FT)	SLOPE (%)	PIPE SIZE	TYPE	NOTES
<b>PUTNAM RD</b>										
* P-20	T-20	S-20	1006.64	1012.07	130	128	4.23%	18"	RCP	-
* P-20A	S-20	S-20A	1012.57	1013.56	35	33	3.04%	12"	RCP	-
* P-21	S-20	S-21	1012.17	1039.36	289	288	9.45%	18"	RCP	-
P-21A	S-21	S-21A	1039.86	1041.08	22	19	6.41%	12"	RCP	-
P-21B	S-21	S-21B	1039.86	1041.18	12	9	14.21%	12"	RCP	-
P-22	S-21	S-22	1039.61	1065.88	284	283	9.29%	15"	RCP	-
P-23	S-22	S-23	1066.13	1067.25	24	21	5.32%	12"	RCP	-
P-24	S-22	S-24	1066.13	1067.84	21	18	9.48%	12"	RCP	-
P-25	S-24	S-25	1067.94	1068.67	22	19	3.83%	12"	RCP	-
P-26	S-25	S-26	1068.77	1069.80	31	29	3.54%	12"	RCP	-
<b>* MCKENNA BLVD &amp; PILGRIM RD</b>										
P-29	T-30	S-30	1004.81	1005.05	11	7	3.69%	30"	RCP	-
P-30	S-30	S-31	1007.45	1010.98	177	173	2.04%	30"	RCP	NCM
P-31	S-31	S-32	1011.08	1012.85	598	593	0.30%	30"	RCP	-
P-32	S-32	T-33	1013.81	1014.85	37	33	3.11%	19"X30"	HERCP	-
P-34	S-32	T-34	1013.85	1014.09	11	7	3.33%	18"	RCP	-

## STORM STRUCTURE ADJUSTMENTS

STRUC. NO.	ID NO.	STATION	LOCATION (OFFSET)	EX TOC	PROP TOC	ADJ (FT)	NOTES
<b>PUTNAM RD</b>							
ADJ-1	AS2770-005	200+42.59	RT-7.40	1010.95	1010.95	0.00	18" STM TAP (T-20)
<b>MCKENNA BLVD &amp; PILGRIM RD</b>							
ADJ-2	IN2870-001	302+15.58	RT-3.80	1017.79	1017.79	0.00	18" STM TAP (T-34); [4]
ADJ-3	IN2870-002	302+64.16	RT-1.29	1017.96	1017.96	0.00	19"X30" STM TAP (T-33); [4]

## STORM PIPE REMOVALS & ABANDONMENTS

PIPE REM NO.	REMOVE FROM	REMOVE TO	LGTH (FT)	PAID (Y/N)	REM LGTH PAID (FT)	ABN LGTH (FT)	SLURRY (CY)	PIPE SIZE	PIPE TYPE	NOTES
<b>MCKENNA BLVD</b>										
RP-1	ADJ-2	ADJ-3	49	N	0.00	0.00	0.00	18"	RCP	

## ULO SCHEDULE

ID NO.	STATION	LOC (OFST)	TYPE	NOTES
<b>PUTNAM RD</b>				
ULO40	201+35.89	RT-9.84	WAT LAT	
* ULO41	201+63.80	RT-22.54	4" GAS	TOP = 1015.04, NO CONFLICT
* ULO42	201+68.73	LT-10.42	12" WAT MAIN	TOP = 1011.94, NO CONFLICT
ULO43	201+81.10	RT-8.75	WAT LAT	
ULO44	202+46.96	RT-3.57	WAT LAT	
ULO45	203+29.97	RT-4.09	WAT LAT	
ULO46	204+00.97	RT-4.54	WAT LAT	
ULO47	204+56.04	LT-13.02	12" WAT MAIN	
ULO48	204+70.77	RT-5.42	WAT LAT	
ULO49	205+52.56	RT-5.98	WAT LAT	
* ULO50	206+84.11	RT-7.93	4" GAS	TOP = 1060.80, MINIMAL CLEARANCE
ULO51	206+92.03	RT-6.14	12" WAT MAIN	
ULO52	207+44.64	LT-12.89	10" WAT MAIN	
ULO53	207+75.15	LT-12.55	10" WAT MAIN	

## ULO SCHEDULE

ID NO.	STATION	LOCATION (OFF TYPE)	NOTES
<b>MCKENNA BLVD &amp; PILGRIM RD</b>			
ULO70	302+62.05	RT-1.43	16" WAT MAIN
ULO71	302+33.05	LT-29.82	WAT LAT
ULO72	302+45.44	LT-88.57	WAT LAT
ULO73	302+57.29	LT-150.17	WAT LAT
ULO74	302+64.19	LT-226.22	WAT LAT
ULO75	302+69.30	LT-312.24	WAT LAT
ULO76	302+72.49	LT-381.86	WAT LAT
ULO77	302+74.65	LT-444.57	WAT LAT
ULO78	302+76.80	LT-521.89	WAT LAT
ULO79	302+78.04	LT-575.22	4" GAS
ULO80	302+72.59	LT-590.81	4" GAS

## SPECIFIC NOTES:

- [3] INSTALL 3' SUMP BELOW PIPE INVERT, GIVEN IN CHART
- [4] EX STRUCTURE IS DOUBLE-H INLET